

Designing solutions for a positive life

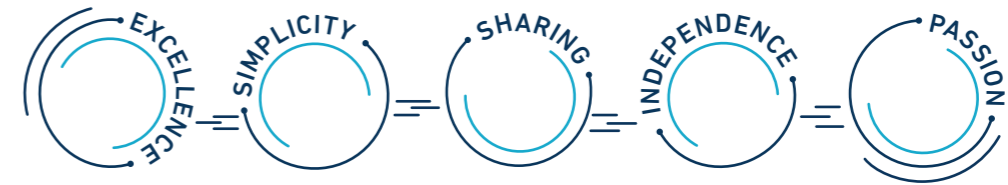
essentials 2025




ARTELIA



Designing solutions for a positive life



Consulting
Master planning & feasibility
Design & engineering
Construction & project management
Asset & facility management
Turnkey solutions

Mobility
Water
Energy
Buildings
Industry



11 000
employees (31.12.25)

€1,35 bn
2025 consolidated
turnover

100%
capital held by managers
and employees

Established in over
40
countries

More than
100 years
of experience

WE SUPPORT

SBTi



4 EDITORIAL

- 5 Growth
- 6 Locations
- 8 Talents
- 10 CSR
- 12 Innovation
- 15 Artelia Digital Solutions
- 18 Artelia Advisory
- 19 Trace by Artelia

20 Mobility

24 Water

28 Energy

31 Buildings

37 Industry



Heading for 2030!

What a lot of changes for Artelia in just five years! At the end of 2025, our Group employed more than 11,000 people, 5,000 more than in 2020. Our 2025 turnover reached €1.35 billion, representing a 17% increase compared with 2024, with higher operating income in both absolute and relative terms compared with turnover. We consolidated our position among the top 10 European engineering firms and joined the ranks of the 50 largest engineering firms in the world (ENR 2025 “Global Design Firms” ranking).

Beyond the figures, this growth reflects a genuine strengthening of our expertise in our five core markets and a real transformation of our global capabilities. The three companies that joined us in 2025 -ERREGI (Italy), HNIT (Iceland), and LCI (Australia) - fully symbolize the continuous enrichment of our expertise and the consolidation of our presence in three key economic regions: Europe, America and Asia-Pacific. We also remain very active in the Middle East and Africa, where infrastructure and development needs remain considerable.

The projects outlined in this brochure illustrate the wide range of our activities and expertise in a number of major areas, such as rail and airport infrastructure, drinking water supply and flood carbon-free electricity generation, transmission and storage. Other projects include hospitals, data centers, the modernization of industrial facilities, metal recycling, and much more.

Over the past five years, Artelia has undergone profound changes while remaining true to its purpose and values. This is reflected in an ambitious CSR policy implemented with conviction, significant progress in ISO certifications (9001, 14001, 27001, etc.), accelerated research and innovation activities, full adoption of eco-design to meet the needs of decarbonization and biodiversity preservation, and strong expansion of the Artelia Foundation’s philanthropic activities.

The following pages highlight the key achievements of 2025, such as the rollout of our TRACE eco-design approach, the maturity of our WizArt customer interface, the use cases for AI in our business activities, and the expansion of our consulting services through Artelia Advisory. The excellent results of the internal engagement survey “Bleexo 2025,” to which 81% of our employees responded, crowned the year 2025: with a satisfaction rating of 8.2/10. Our Group is firmly positioned among the most attractive employers. This is a source of immense shared pride and a well-deserved reward for the daily efforts of all Artelia employees.

In 2025, these solid foundations also provided the perfect stepping stone for adjusting the Group’s organization and building our new “Ambition 2030” roadmap... whose name says it all! Effective at the beginning of 2026, this new internal organization, which is more compact and easier to understand, better reflects our global footprint (more than half of the Group’s turnover is generated outside France). Similarly, our “Ambition 2030” strategic roadmap sets a clear course and aspiring goals in a world that is more volatile and uncertain than ever. It offers the essential perspectives for a strong and confident mobilization of energy and talent across the “Artelia planet,” beyond the uncertainties of the daily economic environment.

By 2030, Artelia aims to significantly strengthen its multidisciplinary expertise (water, energy, mobility, buildings, industry) in its main countries of operation, thereby consolidating its position among the world’s leading engineering firms with revenue exceeding €2 billion. Our Group will continue to rely on its employee-shareholder model, which is a source of independence. It will continue to roll out its ambitious CSR policy and its efforts in the areas of eco-design, decarbonization, biodiversity conservation, and climate change adaptation. This is our imperative duty, as the needs remain overwhelming and the changes vital to the survival of our human societies and ecosystems. Artelia will also strive to develop and deploy the new digital technologies available on a massive scale, integrating artificial intelligence into its activities with determination, transparency, and judgment.

So many challenges that we will tackle together, so many opportunities that we will seize collectively with confidence, enthusiasm, and determination. To fully meet the expectations of our customers, society, and the planet every day. Enjoy reading!

Benoît Clocheret

Chief Executive Officer



Growth

Three new companies have joined Artelia

LCI

AUSTRALIA

Founded in 2007, LCI is one of Australia’s leading building engineering companies and has a strong local network with six offices in Sydney, Melbourne, Brisbane, Canberra, Perth and Adelaide. With 280 employees, it provides a full range of design services in the commercial property sector and demanding technical fields such as healthcare, data centers and defence. Its teams have contributed to iconic projects such as Crown Barangaroo in Sydney, Royal Adelaide Hospital, Alttassian Central in Sydney and dozens of data centres in Asia-Pacific. They have been involved in more than 300 data center projects, including hyperscale projects.

ERREGI

ITALY

Based in Rome, Erregi provides consulting services across the entire scope of transport and mobility infrastructure (road, rail, airport, tram and metro). For nearly 40 years, its 30 specialists have been managing complex, multidisciplinary projects, while also acting as systems integrators. The rail link between Riyadh and Jubail, the development of a new city model with a strong environmental focus on the island of Antigua, and lines A, B and C of the Rome metro are among the flagship projects for which the company has been engaged.

HNIT

ICELAND

Located in Reykjavík, HNIT Consulting Engineers has over 50 years of experience in civil engineering. With around 40 employees, it is renowned for its expertise in planning, design, project management and construction supervision. HNIT has acquired solid experience in carrying out complex projects in Iceland, notably for the Karahnjúkar and Budarhals hydroelectric power stations. The company is also a key partner for the country’s public authorities.

Locations

Supporting our clients worldwide



more than
11 000
employees

Projects in over
100 countries

Operating in over
40 countries

Talents

Developing our skills and collaborating for success

INTERNATIONAL EXPANSION OF OUR BUSINESS EXPERTISE

As part of its new "Ambition 2030" strategy, Artelia is committed to further developing its international activities by strengthening its multidisciplinary approach worldwide. The aim is to offer a broader range of expertise in the Group's five core markets, in the main countries where it is established and operates. This policy, which is based on recruitment, internal mobility and selective external growth operations, has recently enabled the Group to increase its capability, particularly in Italy, Scandinavia, the United Kingdom, the Middle East, Hong Kong and Australia.

In support of this policy, training campaigns have continued through Artelia Academy, which now has campuses in Canada, Spain, France, Italy, and the United Kingdom. In addition, all our locations around the world have access to training modules via our digital tool, 360 learning. The number of active users who have completed at least one module almost doubled between 2023 and 2025, rising from 5,200 to 9,500.

Artelia also promotes mobility, both geographical and professional. A career map has been implemented to enable employees to better understand their career development opportunities within the Group. In addition, individual support is provided to facilitate each professional mobility.

A HIGH LEVEL OF SATISFACTION AMONG OUR EMPLOYEES

Artelia is growing while remaining true to its values of excellence, simplicity, sharing, independence and passion. The large majority of our employees have expressed their attachment to this "sense of well-being together," which is one of the Group's key characteristics.

The internal survey "Bleexo 2025" to which 81% of employees responded (up 2 points), recorded an overall satisfaction level of 8.2/10, corresponding to the highest benchmark for companies conducting this type of survey.

Considering the panel of employees who responded to Bleexo 2025:

82%

find their work meaningful



83%

feel fully integrated into the company



84%

find they can take initiative within the Group

78%

consider they are growing personally



90%

support each other

CSR

Higher targets for 2030

2025 RESULTS AND 2030 AMBITION

The past year was marked by both the end of the 2020-2025 cycle and the development of a new roadmap for the period up to 2030. This is an opportunity to review the most significant achievements of the past five years and to present the key objectives that will now guide our actions in the four pillars that structure the Group's CSR policy.

ENSURE RESPONSIBLE GOVERNANCE

Two major milestones were achieved for the 2020-2025 period. The first is the implementation of an ESG risk assessment procedure for 100% of our significant commercial bids. The second is the strengthening of our 100% employee share ownership model, with a steady increase in the number of employees involved, particularly those aged under 45.

2030 Ambition

We want to deepen our ESG risk analysis, focus on implementing responsible purchasing processes, and offer more employees around the world the opportunity to become shareholders in the Group.

DEVELOP OUR HUMAN CAPITAL

Since 2020, numerous improvements have been made to employee health and safety, inclusion, professional training, and career development. Gender diversity in management and executive positions has also improved. The excellent results of the latest annual engagement surveys attest to the well-being of the majority of employees within the company.

2030 Ambition

We will continue to enhance safety, women's access to leadership positions, and career opportunities. We also want to establish universal coverage for all our employees worldwide, the details of which are still to be finalized.

PROTECT OUR ENVIRONMENT

In the past 5 years, Artelia has made significant progress in calculating its GHG emissions and has confirmed an ambitious reduction trajectory with the SBTi (Science Based Targets initiative). Various tangible actions have been taken, such as switching the vehicle fleet to hybrid or electric models, encouraging the use of bicycles, and using electricity from 100% renewable sources (France). To serve its clients, the group has also designed and started deploying an original eco-design tool, TRACE by Artelia.

2030 Ambition

Helping our clients limit the impact of their projects and reducing Artelia's emissions remain our priorities. We want to promote an eco-design approach in 100% of our significant bids, while continuing the Group's decarbonization program.

CONTRIBUTE TO DEVELOPMENT AND SOCIAL PROGRESS

By participating in several research chairs, doctoral initiatives, and research programs, Artelia has contributed to strengthening scientific and technical knowledge and professions. The Group has also significantly increased its investment in the Artelia Foundation, a philanthropic entity that supports social, humanitarian and environmental causes.

2030 Ambition

We will expand our scientific and technical partnerships to become a significant player in the evolution of our profession. We plan to double the resources of the Artelia Foundation by 2030 and encourage projects carried out for the benefit of charitable organizations.

Significant progress on our labels and certifications



AWARDED GOLD STATUS BY ECOVADIS

With a score of 84/100, up 5 points from 2024, Artelia ranks in the top 2% of the 150,000 companies assessed by EcoVadis. This organization considers four key CSR themes (environment, social and human rights, ethics, responsible procurement).



AWARDED SILVER STATUS BY CYBERVADIS

With a score of 891/1000, 80 points higher than in 2024, Artelia now ranks among companies with a "mature" cybersecurity system in terms of the four areas analyzed (confidentiality, data protection, operational maintenance, third-party risk management).



SBTi

At the end of 2025, the Group resubmitted its decarbonization trajectories to the SBTi in order to include in its baseline year the GHG emissions from various external growth initiatives carried out between 2023 and 2025.



ISO 45001

Artelia has stepped up the rollout of ISO 45001 certification across all its entities, with nearly 53% of its workforce now certified, thereby consolidating its employee health and safety management system.

ISO 14001

Artelia continued its environmental certification campaign. The initial scope was expanded to include numerous countries in Europe, Asia, Africa, and the Middle East. The certification now applies to more than 50% of the Group's employees worldwide.



ISO 27001

Artelia has also begun certifying its sites in France and the United Kingdom for information security. The first certifications obtained in 2025 cover nearly 20% of the Group's workforce.

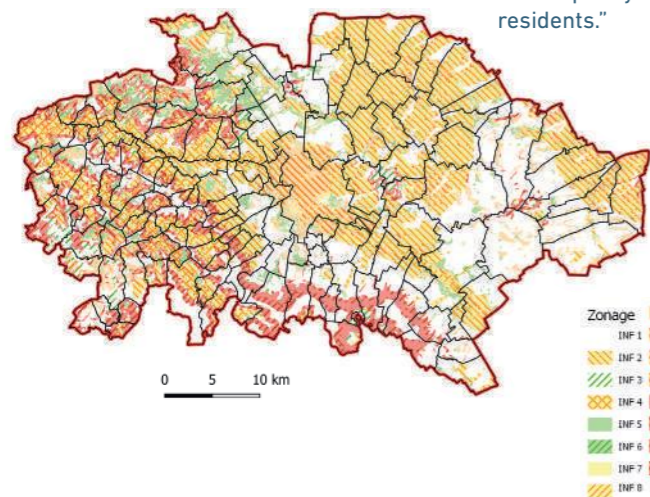


Innovation

Recognition of our commitment to research and innovation

EUROPEAN URBAN AND REGIONAL PLANNING FIRST PRIZE FOR THE "GREATER REIMS RAIN PLAN"

The result of five years of research and recipient of several awards in France, the Greater Reims Rain Plan (covering an area of 1,500 km² and 270,000 inhabitants) was awarded the European Urban and Regional Planning First Prize in 2025. Artelia developed the Method'O tool for this project, which coordinates geomatics tools, innovative consultation processes and a susceptibility model (ORUS) to characterize soil behavior and runoff in a given area. The jury of the European Council of Spatial Planners (28 countries) noted the emergence of a new approach to water management in urban planning. It praised a project that combines "data-based modeling using innovative techniques and the co-creation of solutions with the local community." The jury concluded that this "methodology enables stormwater management that takes into account biodiversity, flood mitigation, environmental resilience and the overall quality of life of residents."



THE ISÈRE AMONT PROJECT AWARDED BY THE FRANCE'S NATIONAL ENGINEERING GRAND PRIZE

Supported by SYMBHI (Isère development syndicate) and ELEGIA (delegated project management), the Isère amont project received the "Adapting existing infrastructure to combat climate change" award at the Grand Prix National de l'Ingénierie (National Engineering Awards). This distinction highlights an approach that aims to protect populations from flooding "by working with the river" and rewards the three companies in the ELEGIA consortium, including Artelia. By working simultaneously on protecting the population (300,000 inhabitants), restoring the ecological functions of the Isère, reconnecting natural environments, preserving biodiversity and re-establishing the link between the inhabitants and their river, this project is emblematic of a new way of managing waterways in the service of the region while respecting local ecosystems.

ACCROPODE™ CERTIFIED BY THE SOLAR IMPULSE FOUNDATION

Simple, robust, reliable, and easy to manufacture, Accropode technology, with its recent variations, Accropode II and Ecopode, has been certified by the Solar Impulse Foundation as an efficient and cost-effective solution for protecting the environment. These artificial blocks designed to protect breakwaters use less concrete and require less maintenance than older solutions, while providing a proven habitat for marine species.

ARTELIA DEMONSTRATES ITS EXPERTISE IN UNDERGROUND STRUCTURES AT THE WTC IN STOCKHOLM

Artelia was honored at the World Tunnel Congress (WTC 2025) in Stockholm, where Emma Charanton received the award for best poster and best article written by a young author: *Characterizing Large Openings in Circular Shafts through a Parametric Study*. Her study aims to establish a technical definition of large openings in circular shafts from the perspective of soil, structure, and soil-structure interaction. A good understanding of the loss of rigidity and deflection caused by these openings is crucial for designing effective reinforcements and estimating soil settlement.



DEFENSE OF THREE THESES ON SUSTAINABLE BUILDING, SUBWAY SAFETY AND THE STABILITY OF HYDRAULIC STRUCTURES

Three of the twelve theses co-supervised by Artelia were defended in 2025. Minh Nhat Phi completed his study on the design of a "multipurpose assembly node" to facilitate the dismantling of buildings as part of a circular economy approach. Poeiti Dorado delivered an innovative research work on smoke propagation in subways, a major safety issue. Matias Renaut developed a sediment transport model adapted to the study of scouring, a phenomenon that is still difficult to predict and damaging to structures. All of these results enrich the range of solutions offered by Artelia.

KEYSTONE, OPTIMIZED PROJECT MANAGEMENT PLATFORM FOR SHELL IN THE UNITED KINGDOM

Developed by Artelia in the United Kingdom, KEYSTONE is an integrated digital ecosystem that implements a suite of tools (Project for the Web, Teams, SharePoint, BulldozerAIR, PowerBI, and WizArt) to simplify project control and delivery across all Shell UK sites. These tools ensure highly reliable and transparent reporting.

CRS: AI USED TO IMPROVE CONSTRUCTION SITE SAFETY IN ITALY

Combining cameras and artificial intelligence, CRS (Construction Remote Supervisor) enables real-time monitoring and automatic detection of safety rule violations on construction sites. With its secure data storage and robust platform, accessible via the web and a mobile app, CRS provides a reliable and highly cost-effective remote supervision solution.

SHARING EXPERIENCES IN MODELING

In September 2025, Artelia organized a meeting in Grenoble between the four research chairs it supports as a sponsor (Ville Métabolisme – Université PSL, Medelia, Oxalia, AugmentIA) and mobilized its laboratory, Artelab, and Port Revel teams to conduct a cross-disciplinary discussion on modeling and representations. These sessions provided an opportunity for fruitful exchanges on the various current practices and developments in this field.

Visit to Artelab, which inaugurated new physical modeling facilities on the occasion of the meeting of the four chairs.

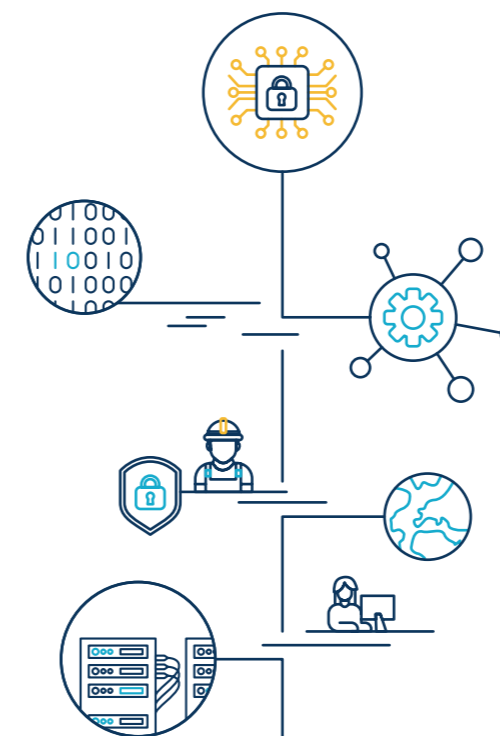


©Franck Ardito

ARTELIA

Digital Solutions

Cybersecurity, asset management, artificial intelligence, and software publishing: four major areas of development



SIGNIFICANT PROGRESS IN CYBERSECURITY

Artelia continues to improve its procedures and systems dedicated to data security and digital usage. The Group's efforts have been recognized by Cybervadis, which awarded us a score of 890/1000, 80 points higher than in 2024. Artelia is now considered by this assessment body to be "mature" in terms of cybersecurity.

In 2025, the Group also embarked on an ISO 27001 certification program. By the end of the year, some of our activities and sites in France and England were compliant with this standard, covering around 20% of the Group's workforce. This rollout will continue in other countries in 2026.

Artelia has complied with the European NIS 2 directive, dedicated to strengthening cybersecurity, in order to be able to effectively support its clients in risk management and data security.

LAUNCH OF AN INTEGRATED OFFERING OF SPECIALIZED SOFTWARE FOR PUBLIC WORKS

ADS (Artelia Digital Solutions) continues to improve its specialized and purpose-built software that meets the specific needs of design offices. In 2025, our teams highlighted this key differentiator for Artelia in an integrated offering for the public works sector. It is based on three products: QAAD to harmonize and optimize the production of plans, NJUT to aggregate and visualize heterogeneous 2D/3D data, and Simillar to quickly simulate the phasing of construction sites.



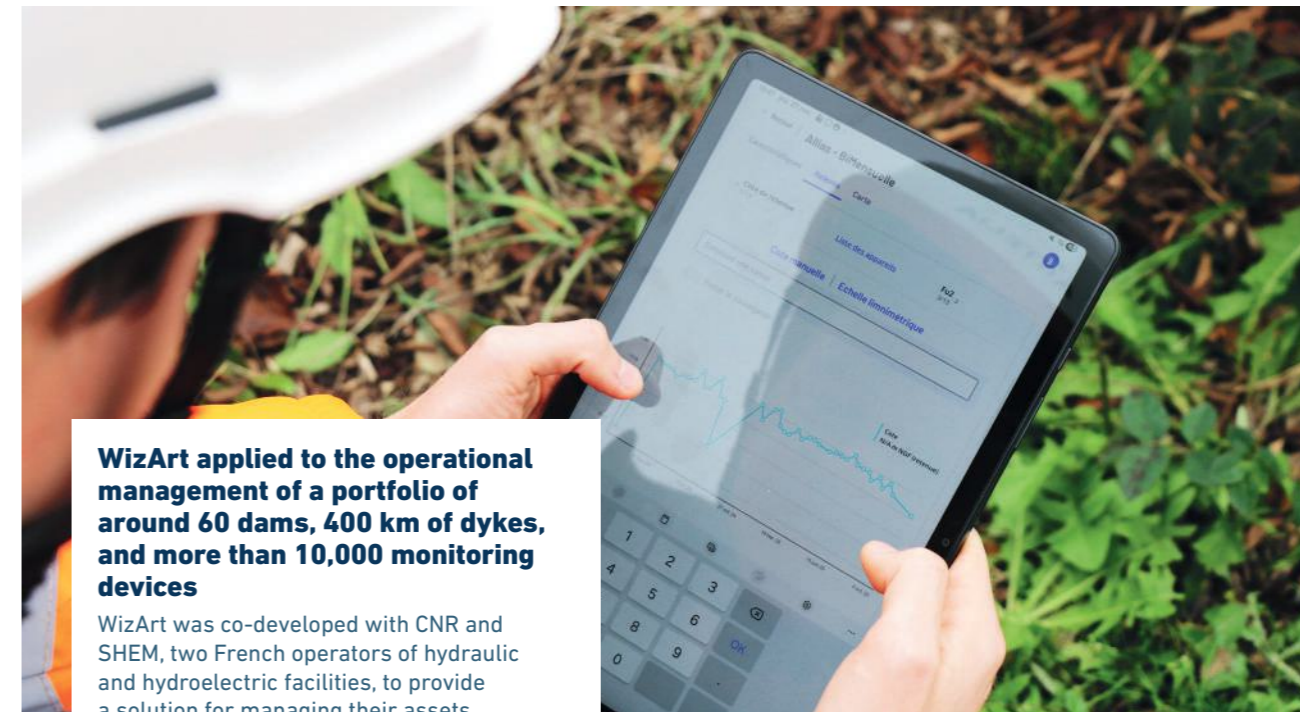
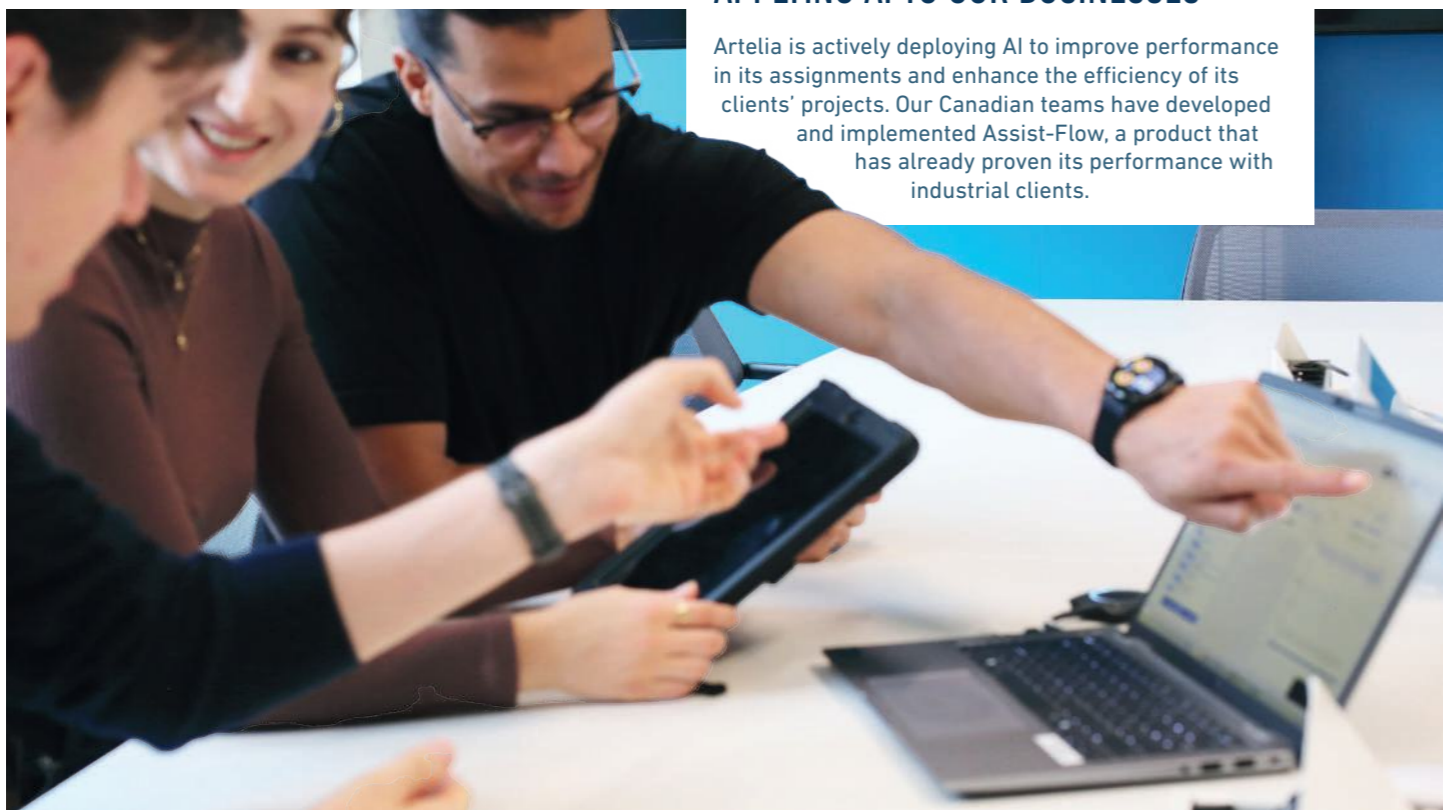
WIZART, THE ARTELIA GROUP'S CLIENT INTERFACE, REACHES A NEW MILESTONE

2025 was a particularly productive year for WizArt, our customer interface for project tracking, multi-site framework agreements, field operations, and asset management. Numerous features were added to improve data integration and sharing (dashboards, mapping), while also enhancing usability. 165 customer spaces are now open in WizArt.

One of the major events of the year was the launch, after two years of development, of WizArt Operations for a large-scale project among the 165 mentioned above: the inspection of dams and dykes belonging to CNR and SHEM. WizArt Operations was designed to adapt to all types of assets, including engineering structures.

APPLYING AI TO OUR BUSINESSES

Artelia is actively deploying AI to improve performance in its assignments and enhance the efficiency of its clients' projects. Our Canadian teams have developed and implemented Assist-Flow, a product that has already proven its performance with industrial clients.



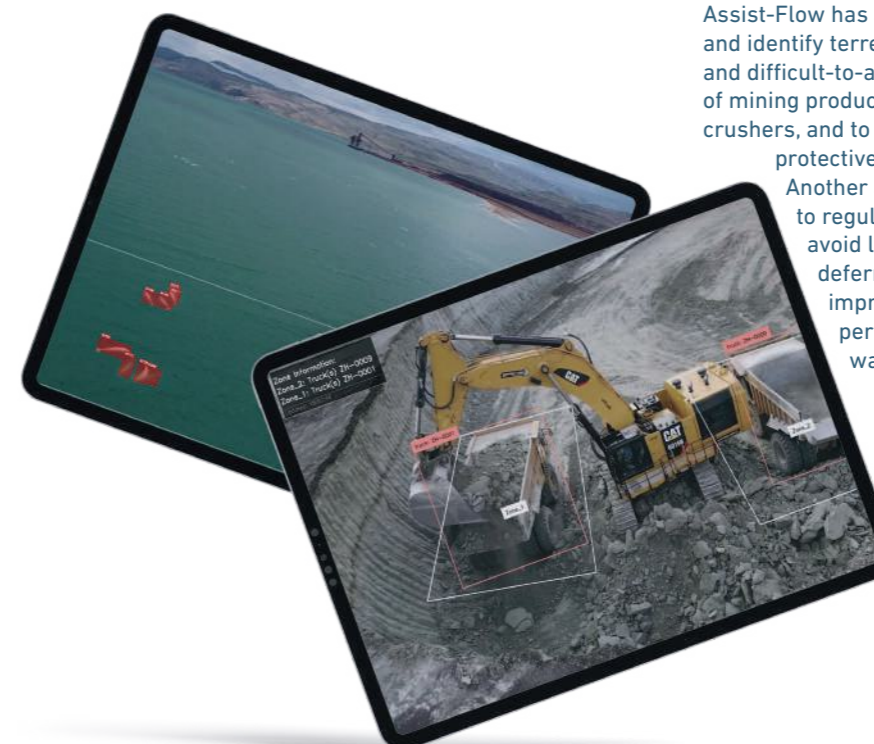
WizArt applied to the operational management of a portfolio of around 60 dams, 400 km of dykes, and more than 10,000 monitoring devices

WizArt was co-developed with CNR and SHEM, two French operators of hydraulic and hydroelectric facilities, to provide a solution for managing their assets. Our platform centralizes all data from structural monitoring in a single tool that offers extensive management capabilities. Each asset and instrument in this portfolio is integrated, along with its location, configuration, and operating data. The tool offers the ability to plan operations and inspection rounds. The mobile application provides access to essential information in the field via a tablet and facilitates the collection of new data (measurements, photos, maintenance reports, etc.). Finally, the office interface provides various visualization and processing options (maps, graphs, reports), as well as data import and export capabilities.

Assist Flow, a smart solution for optimizing complex or repetitive operations

Assist-Flow is a comprehensive software ecosystem comprising advanced learning and analysis modules that can process a wide range of standardized and industrial data, including imagery. Its ability to seamlessly integrate multiple data streams into a unified analytical format makes it a powerful tool for accelerating decision-making. Designed to facilitate prototyping and to be deployed securely, either locally or via a cloud infrastructure, it provides robust solutions for managing complex or repetitive tasks.

Assist-Flow has already been deployed to inventory and identify terrestrial and marine fauna at a sensitive and difficult-to-access site, to analyze the particle size of mining products and direct trucks to the appropriate crushers, and to verify the proper use of personal protective equipment on construction sites. Another application is currently being considered to regulate the loading of bulk rail cars and thus avoid losses during transport. In real time or deferred, Assist-Flow has enabled a significant improvement in the functional and financial performance of the operations on which it was deployed in each of these cases.



ARTELIA Advisory

Artelia Consulting expands its service offering and becomes Artelia Advisory

SIGNIFICANT EXPANSION OF OUR CONSULTING SERVICES

2025 was a busy year for lending and investor advisory projects, as well as ESG (environmental, social, and governance) services. Artelia Consulting carried out technical due diligence assignments for a wide variety of projects (household waste-to-energy plant, solar thermal power plants, methanization unit, aquatic center, tunnels and highways, corporate headquarters, etc.). It was involved in several large-scale operations, such as carrying out all due diligence assignments for the new Libreville International Airport.

During the year, our subsidiary also began expanding its services by integrating new disciplines and new international consultants, which led it to strengthen its positioning and adopt the name Artelia Advisory at the beginning of 2026. The group's shareholding structure (100% employee-owned) gives Artelia Advisory valuable independence in the consulting sector.

Artelia Advisory supports its clients in five key areas:



Due diligence for the new Libreville International Airport

📍 Gabon

Located in Andem, 60 km from the capital, this airport project, scheduled to open in 2030, aims to handle two million passengers per year. The investment, worth over €300 million, will be carried out through a public-private partnership. This flagship project aims to make Gabon a regional air hub with modern infrastructure to support economic growth and connectivity in Central Africa. Artelia Consulting has been selected by a pool of international banks to carry out all due diligence work for the project (technical, market, financial, environmental and social).

ARTELIA ADVISORY, ACCELERATING POSITIVE TRANSITIONS

Artelia Advisory provides public and private decision-makers with its independent, multidisciplinary perspective, grounded in the operational realities of projects and organizations. It helps its clients secure their strategic decisions and make their development and investment choices by taking into account all financial, environmental and societal issues.

Drawing on the Group's expertise in the design and supervision of development projects, Artelia Advisory benefits from unique benchmarks and feedback that help it build reliable scenarios and optimal execution processes. Artelia Advisory mobilizes experienced multidisciplinary teams of engineers, economists, urban planners, architects, geographers, innovation specialists and community engagement experts who are able to grasp issues in all their complexity.

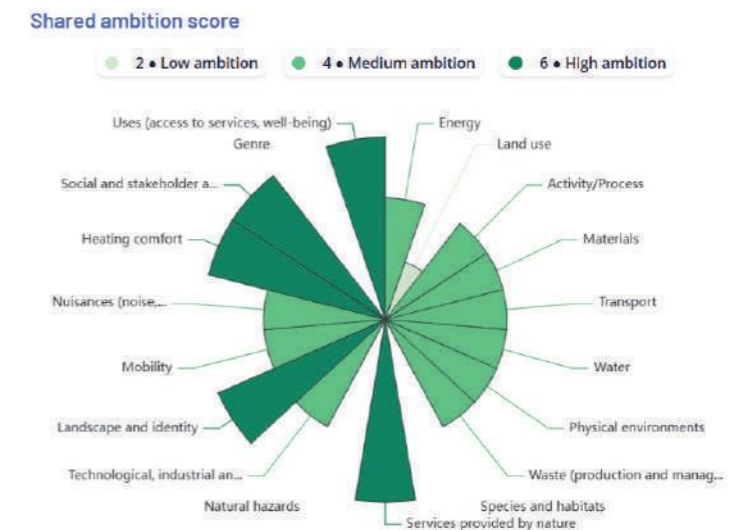
TRACE by ARTELIA

Our eco-design approach continues to be rolled out

ANTICIPATE ALL IMPACTS TO REDUCE THEM MORE EFFECTIVELY

Involved from the preliminary planning stages, eco-design is a fundamental lever for tangibly improving design and construction practices. That is why our environmental specialists have developed an innovative approach, TRACE by Artelia, which is now mature and being deployed.

The principle is based on 19 qualitative measures covering all major environmental issues (carbon, pollution, biodiversity, society, living environments, risks) in order to establish a project's impact profile. Using this initial profile, the client can express their ambitions and priorities, which Artelia then translates into tangible objectives. The profile is then updated throughout the project to ensure that these objectives are monitored.



AN INCREASING NUMBER OF USE CASES

In 2025, TRACE was integrated into the WizArt interface to ensure data preservation and facilitate access, while offering a range of visualization options. Nearly a hundred initial profiles are currently hosted on WizArt. This deployment covers all of Artelia's markets and a variety of projects, such as the reopening of a quarry, the expansion of an industrial site, and the creation of a network of safe bike paths.

TRACE has proven to be very effective in clearly highlighting the environmental and societal challenges of each project, providing a rational basis for discussion with the client to identify and prioritize their objectives. This method also helps better targeting levers and solutions to be implemented to reduce impacts.

Implementation of TRACE for the expansion of the FIT plant in Nantes

📍 France

TRACE was used to provide eco-design services involving the construction of a factory manufacturing industrial piping for future EPR2 nuclear reactors, to be constructed on a site previously occupied by a coal-fired power plant. TRACE identified and assessed the project's impacts, both positive (decontamination, revegetation, energy savings, water retention, etc.) and negative (use of new materials, GHG emissions, acceptability, etc.). A comprehensive impact profile and detailed ambition charts were thus created to feed into the eco-design notice for the simplified preliminary project file.



NEW HIGH-SPEED LINE BETWEEN KENITRA AND MARRAKECH

📍 Morocco

As part of the Morocco Rail Plan 2040, the Moroccan National Railways Office (ONCF) is leading a vast program to expand and modernize the national rail network, covering conventional lines, high-speed lines (LGV), port connections, and network infrastructure. The creation of the Kenitra-Marrakech HSL, representing nearly 430 km of new lines, is part of this development plan, which has been fast-tracked to accommodate the organization of the 2030 FIFA World Cup.

As the integrated project management leader, Artelia is working for the design-build consortium on the Sidi el Aidi-Marrakech section, which is approximately 200 km long. Our teams are specifically responsible for the integrated design and supervision of the construction of the track and catenary subsystems. They are also managing the static and dynamic tests.



Decarbonization

INTEGRATING DECARBONIZATION INTO MOBILITY PLANNING IN COPENHAGEN

📍 Denmark

In 2025, Artelia provided two analyses to serve as a basis for mobility development in Copenhagen. In partnership with Urban Creators and EY, the first analysis covered the entire metropolitan area. It aimed to establish a solid decision-making basis for planning future mobility infrastructure and solutions, including aspects such as CO₂ emissions, public health, and noise reduction.

The second was a preliminary study of how the future district of Østhavnen can become a cycle-friendly area. In collaboration with Gehl Architects, Artelia explored options for bicycle infrastructure capable of supporting the district's development and creating attractive connections across the port.

Gehl Architects

📍 Denmark and Morocco

Construction of railway maintenance centers

The expansion and modernization of rail networks require parallel adjustments and resizing of rolling stock maintenance infrastructure. Our Group was involved in several projects of this type in 2025. In Morocco, it is assisting ONCF with the architectural design, technical studies and construction supervision of the Fez technical center and four maintenance stations located in Meknes, Sidi Kacem, Skhirat and Mohammedia. In Denmark, our teams contributed to the creation of the Næstved workshop for the national railway company (DSB). Dedicated to the maintenance of various types of electric trains, this center meets the new needs associated with the electrification of the Danish network.

📍 France

Redesign of the apron at Roland Garros Airport

Artelia has been supporting Roland Garros Airport on Reunion Island for several years. In 2025, our Group was selected to manage the redesign of its apron. This encompasses a variety of functional installations characteristic of this type of infrastructure: aircraft runways, signage, lighting and beacons, aircraft power supply, guidance markers, underground kerosene supply network, etc.

📍 Iceland

First line of the Borgarlína BRT in Reykjavík

Artelia subsidiary Hnit is designing the Borgarlína bus network, a high-capacity public transport system covering the Icelandic capital and surrounding municipalities. It is designed as a Bus Rapid Transit (BRT) network with dedicated lanes, frequent service and priority at intersections to make this mode of transport faster and more reliable. Construction of the first 18.5 km section, involving two municipalities, will begin in 2026.

📍 Vietnam

Opening of Line 1 of the Ho Chi Minh City Metro

This first line, one of six that Ho Chi Minh City plans to build, is 19.7 km long (including 2.6 km underground) and serves 14 stations between Ben Thanh and Suoi Tien. In its first six months of operation, it has been a resounding success, carrying more than 50,000 passengers per day. This line offers users a welcome alternative to traffic jams and provides the city with a means of reducing its CO₂ emissions.

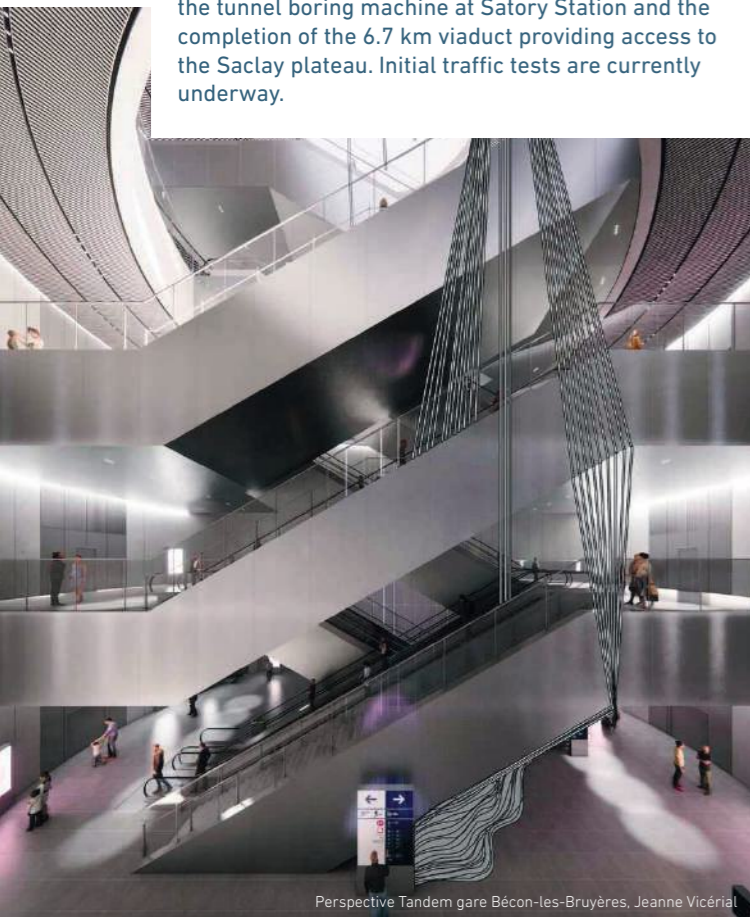
During the construction phase of the line 1, Artelia was responsible for managing and supervising the HSE (Health, Safety and Environment) aspects of this project. Our teams are also involved in the construction of Line 2 project, as the leader of the Procurement part of the project during the Feasibility Studies and FEED Design. It will connect Districts 1 and 12, with 11,3 kilometers of metro track and 11 new stations.

📍 France

New developments on lines 15 and 18 of the Grand Paris Express automated metro system

Work continues to progress on over twenty sites along Line 15 West – southern section of the GPE (five underground stations, 16 service structures, 14 km of tunnel). As the lead contractor for the integrated project management team, Artelia is coordinating a team of nearly 300 people dedicated to the design and construction of the project, with a focus on smooth and agile coordination.

On Line 18, for which Artelia is providing project management services as part of the ICARE consortium, the year was marked by the arrival of the tunnel boring machine at Satory Station and the completion of the 6.7 km viaduct providing access to the Saclay plateau. Initial traffic tests are currently underway.



Perspective Tandem gare Bécon-les-Bruyères, Jeanne Vicérial

📍 Norway

New Strategic Port Plan for Longyearbyen

The port of Longyearbyen (Svalbard) is a key logistics hub serving various locations in Spitsbergen. In addition to freight and cruise ships, the town and its port serve as a base for scientific research conducted in the High Arctic, above the 78th parallel north. Artelia's subsidiary, Dr.techn. Olav Olsen, in collaboration with Menon Economics, is developing a new strategic plan for this port. Our specialists are analyzing its current situation and identifying the main geopolitical, climatic, and environmental parameters to be taken into account in order to develop relevant scenarios for its future development and determine which infrastructure should be created or transformed.

📍 France

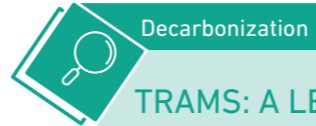
Rehabilitation of the marine pillars of the Saint-Nazaire bridge

Located in the Loire estuary, the Saint-Nazaire bridge is subject to multiple and intense forces. The presence of brackish water, combined with significant tidal ranges and the mechanical action of currents and sediments, has caused damage to a specific area of its piers. The Loire-Atlantique Departmental Council called on Artelia to assist with the technical, environmental, legal and organizational aspects of its repair project throughout the design and implementation phases.

📍 Canada

Transformation of Sainte-Catherine Street West in Montreal

Artelia is responsible for the design and supervision of the major redevelopment project for Sainte-Catherine Street West, one of Montreal's iconic avenues, known worldwide as a lively and festive destination. The project will rehabilitate an aging underground infrastructure network while redeveloping the public domain. Based on the values of inclusion and openness, this project aims to reconcile commercial activity and accessibility by reserving more space for active mobility.



Decarbonization

TRAMS: A LEVER FOR LOW-CARBON, PEACEFUL URBAN MOBILITY

With a view to improving quality of life (reducing pollution, noise, congestion, etc.), many cities have chosen to develop or redeploy light rail networks to provide themselves with a public transport system that is high-capacity, reliable, fast, and low-carbon. Generally less expensive than a metro system, tramways also enable high-quality urban renewal, often incorporating large pedestrian areas and cycle paths.



📍 Paris region

In France, where this mode of transport has been very successful for the past 30 years, Artelia continues to carry out projects to create and, mostly, extend lines. In the Paris region, Artelia is also supporting Île-de-France Mobilités and the Hauts-de-Seine Departmental Council in the extension of tram line T1 from Nanterre to Rueil-Malmaison, which includes 7.5 km of track and 15 stations. Our Group is also responsible for the design and project management of urban developments for the 5.5 km extension of the T1 line to Colombes, west of Paris.

📍 Lyon and Bordeaux

Artelia is the lead contractor for the project management consortium for the new T9 line in Lyon and is supporting Bordeaux Métropole in the development of the Gradignan-Bordeaux tramway.

📍 Montpellier

Our teams were delighted to see the commissioning of line 5 of the Montpellier tramway in December 2025, after six years working as project manager for Montpellier Méditerranée Métropole and TaM (the local public transport company). This new 13-km line connects the northern and western parts of the metropolitan area, serving 25 stations.

📍 Brescia

In Italy, where Artelia is also involved in several tramway projects, our teams are working on the design for the Brescia T2 tramway line (Pendolina-Fiera). They are working under an integrated contract covering both construction and the supply of rolling stock. This new double-track tram line, approximately 11.2 km long, will run through the city center and enable the city to take a major step forward in implementing its Sustainable Urban Mobility Plan (SUMP).

Water



SUPPLYING DRINKING WATER TO AMMAN FROM THE RED SEA

📍 Jordan

Artelia is supporting Meridiam and Suez in the design, construction and operation of a major drinking water infrastructure project. It consists of a desalination plant (840,000 m³/day) located in Aqaba, on the shores of the Red Sea, a 280 MWp photovoltaic power plant to supply the desalination with low-carbon energy, and a 440 km water transfer system from Aqaba to Amman.

Since Jordan is one of the countries most exposed to water stress, this is a strategic project. The desalination plant, one of the largest in the world, is expected to cover around 40% of the country's current drinking water consumption. Artelia is acting as the owner's engineer, managing the technical, contractual and financial aspects throughout the design and construction phases and during the seven-year warranty period.



📍 Saudi Arabia

Extension of the Mughayra wastewater treatment plant in the AlUla region

The increase in the wastewater treatment capacity of the Mughayra plant to 62,000 m³/day is part of a major investment plan launched by Saudi Arabia to develop its cultural and tourist offering in the AlUla region. Artelia is involved in the design phase of this extension, in line with the Kingdom's sustainable development and environmental preservation objectives for the AlUla project.

© AFA+SANAE Architecture



Pollution reduction

IMPROVING SOLID WASTE MANAGEMENT IN CONAKRY

📍 Guinea

With the help of the French Development Agency (AFD) and the European Union (EU), Guinea's National Sanitation and Public Health Agency (ANASP) has undertaken the development and structuring of the downstream segment of the solid waste management sector in Conakry. Artelia is assisting this strategic planning process, contributing with its technical, financial, legal, and organizational expertise in this type of infrastructure.

Our teams are also involved in providing full engineering and project management services for the development of a sanitary landfill compliant with the international standards, and three waste transfer stations aimed at optimizing waste flows. The aim is to reduce the environmental and health impacts associated with the old uncontrolled landfill site at La Minière, which currently receives all of the capital's solid waste. In addition, our teams carried out the preliminary design for the rehabilitation of this dumpsite.

📍 France

Inauguration of a state-of-the-art primary settling tank for the Seine Aval wastewater treatment plant in Achères

A historic plant belonging to SIAAP (Paris region's public sanitation service) and Europe's largest wastewater treatment facility, Seine Aval treats the wastewater of around 6 million people every day. This new primary settling unit uses a range of innovations to optimize effluent distribution based on flow rates and pollution loads, improve the removal of fine waste, and enhance the treatment of dissolved phosphorus and carbon pollution. Artelia assisted the project owner throughout the project, which improved the quality of the discharged water while reducing odor pollution.

📍 Reunion Island, France

Renovation of the Bellepierre drinking water plant

Essential to the region's resilience, this rehabilitation project aims to guarantee a continuous supply of drinking water to nearly half of the population of the Saint-Denis metropolitan area. The program, for which Artelia is the project manager, involves demolishing and dismantling some specific structures and replacing them with more modern, higher-capacity production units (water line, sludge line, reagent building, etc.). Our teams are applying an eco-design approach to this project, with an emphasis on reusing existing structures and materials from demolition.



Climate adaptation

ADAPTING TO CLIMATE CHANGE BY MANAGING RAINWATER DIFFERENTLY

Climate change can lead to an increase in the amount of precipitation and requires us to rethink our approach to flood risk by managing runoff water differently. Artelia has an innovative approach to these issues.

In France, our teams are continuing to roll out the **Méthod'o** to encourage rainwater management at source. As part of this initiative, they conducted a study on behalf of **Saint-Brieuc Agglomération** to define a disconnection program for a 5,830-hectare urban area based on the principle of integrated stormwater management. A comprehensive map of the potential for “de-impermeabilization” and disconnection of stormwater from the public network was produced.

In Montreal (Canada), Artelia contributed to the redesign of **Larivière Street as a “sponge street”**, combining optimal stormwater management, revegetation, and the recreational needs of local residents. Our teams co-designed the development, which included the creation of surface retention basins, a new drainage network, and a multifunctional skatepark that acts as a retention basin.

Canada

Stabilization of the banks of Jacques Cartier Beach Park in Quebec

Faced with accelerated erosion threatening Jacques Cartier Beach Park, Artelia developed an innovative approach combining coastal engineering and phytotechnology. This pioneering hybrid solution, unique in Quebec, ensures sustainable stabilization of the banks and protects biodiversity. At the crossroads of climate resilience, the environment and landscaping, it has made it possible to protect and enhance this iconic site.

Biodiversity conservation

INVENTORY AND PRIORITIZATION OF WETLANDS IN THE AUZE-SUMÈNE WATERSHED

France

The Auze and Sumène river basins, left bank tributaries of the Dordogne, cover an area of 726 km² with a total of approximately 1,000 km of waterways. The Sumène Artense community of municipalities has commissioned Artelia to conduct an inventory study to characterize and prioritize these wetlands. After carrying out floristic inventories and soil surveys, our teams have been working on the prioritization process, which should be finalized in early 2026.



France

Reducing flood vulnerability in a neighborhood in downtown Lorient

Working closely with Lorient Agglomération, Artelia identified the causes of flooding in Lorient city center, Western France. By coordinating several scales, from the watershed to the neighborhood, using a modeled test area and simulating several rainfall events, a set of development scenarios was elaborated. Operational measures were proposed for the Dupuy de Lôme sector, which is located at a low point and suffers from recurrent flooding.

France

Inauguration of the Gèze retention basin

Artelia provided complete project management for this 10,500 m³ three-lobed basin and its ancillary equipment (ventilation, deodorization, screening, drainage, diversion chambers, collectors, and pipes). This development, which strengthens the sewerage network in northern Marseille, will help reducing the risk of flooding and preserve the quality of coastal waters.

Energy



MAINTAINING EFFORTS TO DEVELOP RENEWABLE ENERGIES

📍 Lesotho

Our Group has launched studies for the **Oxbow hydroelectric development**, as the leader of the design and construction consortium. This is an 80 MW capacity facility based on the creation of a 100 m high dam on the Malibatso River.

📍 Indonesia

Our teams have begun the design work for the **Masang 2 hydroelectric project**, a 44 MW facility located in the western part of Sumatra province. It will help strengthening the share of renewable energy in the national electricity mix and improve the reliability of the electricity supply, particularly in the Sumatra power system.

📍 Kenya

Artelia has been selected to manage the project and supervise the construction of the **Seven Forks solar photovoltaic power plant**. This 42.5 MWac facility includes a battery energy storage system (BESS, 3 MW – 4.5 MWh), as well as an electrical substation and a 132 kV high-voltage transmission line.

📍 Philippines

Our Group conducted the Environmental and Social Impact Assessment (ESIA) for a **440 MWp photovoltaic power plant** located in the province of Isabela. We also prepared the Environmental Impact Statement (EIS) as required by national regulations, which enabled the project to obtain an Environmental Compliance Certificate (ECC).

📍 France

Artelia is contributing to the creation of floating solar installations, a cutting-edge solution that prevents land artificialization while reducing evaporation from water bodies. Our teams supported Verso Energy in the creation of the **Gravières de l'Arroux power plant**, which has a total capacity of 23.1 MWp across five water bodies.

VERSO ENERGY

📍 France

Solarization of the Eurotunnel rail terminal

Artelia is assisting Eurotunnel with the design and management of the solarization of its French terminal in Coquelles (Pas-de-Calais, North of France). The project involves the creation of eight ground-mounted and shade-mounted photovoltaic power plants with a total capacity of 45 MWp. It will contribute to the decarbonization strategy led by the operating company, Getlink.

📍 Canada

Wataynikaneyap Project, connecting new Indigenous communities to the power grid

One of the largest Indigenous-led energy projects in Ontario, Wataynikaneyap aimed to connect 16 remote communities to the Hydro One grid, reducing their dependence on diesel generators. The project included nearly 300 km of transmission lines and automated substations. Artelia participated in the design and construction of the Dinorwic Junction and Pickle Lake substations, overcoming challenges related to long-distance electricity transmission and northern climate conditions.

📍 Portugal

Biomethane production in Campo Major

Artelia is conducting feasibility studies and preparing permit applications for a biomethane production facility that will use anaerobic digestion of agricultural residues and livestock waste. The biomethane produced will be injected and blended with natural gas in the high-pressure network.





📍 **Denmark**
Support for Ørsted Bioenergy & Thermal Power A/S, a key player in Denmark's energy sector

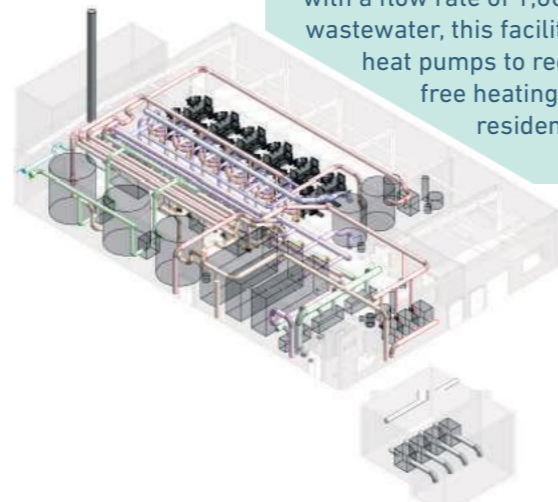
As the country's leading energy company, Ørsted Bioenergy & Thermal Power A/S plays a major role in supplying electricity and heat to the Danish people. Artelia has signed three framework agreements with this company for consulting services in the areas of built assets (power plants and other facilities), production and network equipment (machinery, instrumentation, high-voltage installations), and various multidisciplinary services (planning, customer relations).

📍 **United Kingdom**
Renewal of the EPCM contract with Shell in the United Kingdom

Shell UK has renewed its trust in Artelia, its technical expertise, and its ability to deliver projects in line with the highest standards of quality, safety, environmental performance and corporate social responsibility. This new contract, extending 18 years of collaboration, covers EPCM services related to capital investment works within Shell's Mobility network in the United Kingdom. The development of electric vehicle charging stations, the deployment of new technologies, valet, and the strengthening of convenience retail are key pillars of this investment program.

📍 **Czech Republic and Slovakia**
Construction of an electric vehicle charging network

As one of the leading Czech fuel distributors, Orlen Unipetrol plans to build a network of fast charging stations for electric vehicles in the Czech Republic and Slovakia by 2030. Artelia is supporting this project by assisting in the selection of suppliers for feasibility studies and engineering services.



Decarbonization

RECOVERING WASTE HEAT FROM WASTEWATER AT THE AQUAVIVA TREATMENT

📍 **France**

Artelia is strengthening its commitment to a low-carbon future by supporting Dalkia in the implementation of this strategic energy recovery and CO₂ emissions reduction project, led by the Cannes Lérins urban community. As project manager, our teams are involved in the creation of a unit dedicated to recovering heat from treated wastewater at the Aquaviva wastewater treatment plant in Cannes. Supplied with a flow rate of 1,600 m³/h of treated wastewater, this facility will use 9 MW heat pumps to redistribute carbon-free heating and cooling to local residents and businesses.

Buildings



© Architecture Michel Beauvais Associés, 2024

COMPLETE RECONFIGURATION OF NANCY-BRABOIS UNIVERSITY HOSPITAL CENTER

📍 **France**

This large-scale project for a new regional university hospital center (CHRU) involves bringing together activities currently spread across seven locations in the Greater Nancy metropolitan area at the Brabois site.

The site will be completely reconfigured, combining three new blocks housing Medicine, Surgery and Obstetrics activities with the two existing buildings and reorganizing the various technical, logistical, and energy flows. The new facility, with a gross floor area of 140,335 m² and a capacity of 1,147 beds and places, is designed to be compact, scalable, and reversible.

Its bioclimatic design, which emphasizes natural light and high-quality envelopes, will ensure high thermal performance. Within the consortium led by the architectural firm Michel Beauvais Associés, Artelia is providing technical project management for all trades on this project, which is being carried out while the site remains operational.

📍 **United Kingdom**

An active contribution to the modernization of London healthcare facilities

Artelia has been involved in several hospital projects in Greater London. Our Group was selected as cost consultant for the construction phase of the new Tolworth hospital project in southwest London, a state-of-the-art psychiatric facility that builds on the work previously carried out at Springfield. Our subsidiary Castons is part of the group of experts involved in the construction of the new Queen Elizabeth Hospital in Kings Lynn, a NHP 2.0 facility focused on the patient experience, the first sketches of which have been unveiled. Our subsidiary Pick Everard managed a project in Brixton to convert a disused commercial premises into a permanent blood donation center, the first of its kind to meet the strict standards of NHS Blood and Transplant (the UK blood transfusion and transplant service).

📍 **Thailand**

The Mandarin Oriental Hotel Bangkok celebrates its 200th anniversary in style

Opened in 1876 as The Oriental, the Mandarin Oriental Bangkok stands among Asia's oldest and most legendary five-star hotels. In preparation for its 200th anniversary, the property launched an ambitious and meticulously planned renovation program in 2019 to ensure it continues to set the benchmark for luxury hospitality. The final phase of this program—now nearing completion—focuses on the guest rooms of the two historic wings, as well as restaurants and fitness center. One of the restaurants, Le Normandie, operated by renowned French chef Anne-Sophie Pic, is one of the highlights.

Artelia has been entrusted with full project management and site supervision for this transformative effort. Through this renovation, the hotel will begin its third century with renewed brilliance, offering guests an elevated experience that remains true to its timeless heritage.



📍 **Algeria**

Construction of Société Générale's headquarters

Société Générale has established its Algerian headquarters in the Wilaya of Algiers, in the new business district near the airport. Artelia supported the client by providing project management services for the construction of this 35,000 m² high-rise building spread over sixteen floors. The project adhered to a high standard of environmental performance, with the aim of obtaining HQE Excellent certification.



📍 **France**

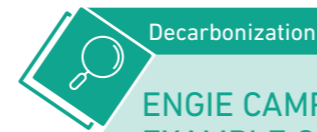
A setting worthy of Jules Verne to welcome the future Cité des Imaginaires

The Cité des Imaginaires - Grand Musée Jules Verne, an exhibition and meeting space dedicated to the famous writer and imaginary worlds, will be created in a former industrial flour mill of Nantes city, one of the first to be built in concrete. Over the years, the building has been used as a warehouse and then as office space. It will now be transformed using a combination of heritage and sustainability approaches (bioclimatic design, bio-based and geo-based materials, reuse, rainwater recovery, etc.). Artelia is carrying out various tasks for this project (project management, technical studies, construction economics, etc.).

📍 **Spain**

Construction of an aparthotel on the Oria campus in Madrid

Located on the new Oria innovation campus, this complex consists of two volumes, with four and twelve storeys above ground, arranged around a central courtyard. The aparthotel will offer 519 rooms, a car park and a swimming pool. It is aiming for BREEAM certification. The developer Metrovacesa has entrusted Artelia with architectural and engineering assignments (such as construction management, project review, construction economics).



Decarbonization

ENGIE CAMPUS, A PRIME EXAMPLE OF ENERGY DECARBONIZATION

📍 **France**

Located in La Garenne-Colombes (Greater Paris region), this 94,000 m² campus, comprising four buildings with a mixed wood and concrete structure, is harmoniously integrated into a two-hectare wooded park. The heating and cooling requirements of this complex are covered 100% by a mix of renewable energies (geothermal energy, photovoltaic panels, and biogas boilers). Artelia provided engineering, project management and supervision services for this project, which won an award at the MIPIM Awards and showcases the expertise and commitment of ENGIE and developer Nexity to carbon neutrality.

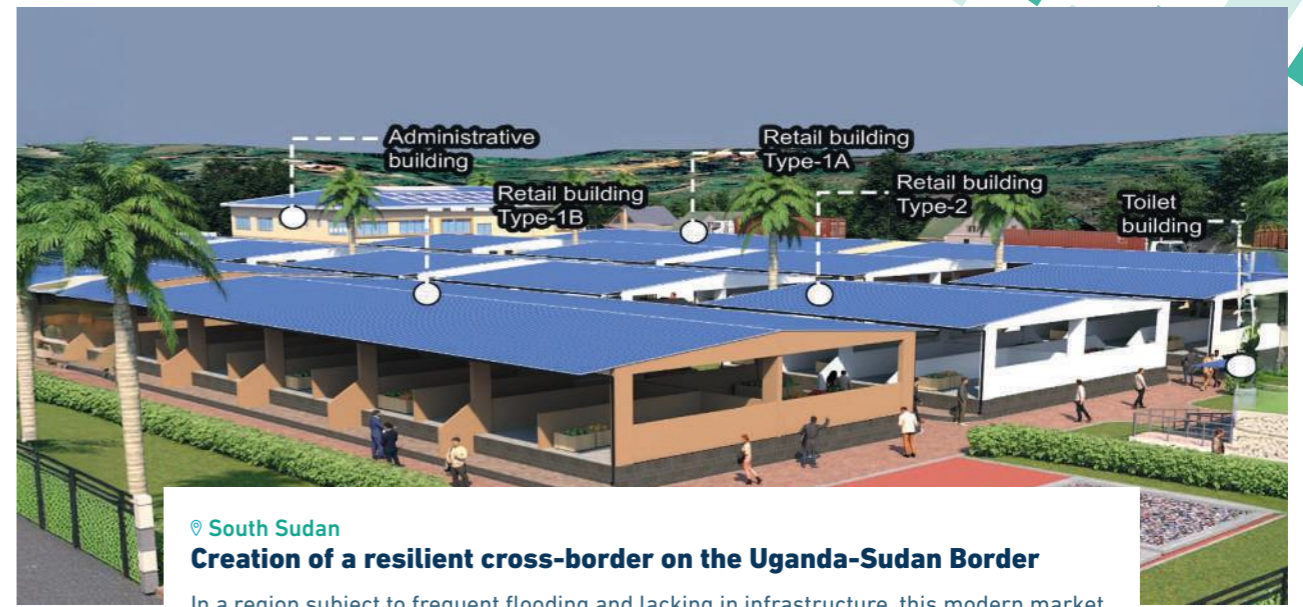
MAKING URBAN SPACES MORE EFFICIENT AND LIVABLE



Italy Urban regeneration of the Milano Innovation District

Artelia is supervising work on two components of the Milano Innovation District (MIND), Italy's new center of scientific excellence, which will form a new district in Milan. Our Group is contributing to the construction of the Molo (Mobility & Logistics Hub), a real estate complex comprising a car park, a shopping center, offices and laboratories.

It is also involved in the 'Infrastructure' component, which encompasses all general subservices, roads and pedestrian areas, green landscape, and the restoration of artificial river systems.



South Sudan Creation of a resilient cross-border on the Uganda-Sudan Border

In a region subject to frequent flooding and lacking in infrastructure, this modern market, designed to withstand climatic hazards, will improve the daily lives of nearly a thousand local traders and provide new opportunities for trade and livelihoods for local residents. Artelia is validating the design and supervising the construction. Covering an area of 12,500 m², this market will house facilities for cereals, tubers, fruit and vegetables, meat, poultry, fish, milk, and textiles, while also offering various amenities (daycare, warehouses, restaurant, etc.).

France Renovation of the Campagne Levêque and Kallisté-La Solidarité neighborhoods

Artelia has been selected by the Aix-Marseille-Provence Metropolitan Authority to coordinate urban planning and inter-site activities for two renovation projects in the Campagne Levêque and Kallisté-Solidarité neighborhoods. In Campagne Levêque, a neighborhood that emerged from the large housing estate movement of the 1950s, the challenge is to open up, rehabilitate, and reconnect the area to provide a more inclusive and sustainable living environment. In Kallisté-Solidarité, the goal is to markedly improve the daily lives of residents by transforming the dense urban fabric through the creation of new housing, a school complex, and local amenities.

Canada Creation of Place des Montréalaises

Artelia contributed to the creation of Place des Montréalaises by ensuring quality control of the materials used (soil, concrete, metallurgy) both on site and in factories throughout Quebec. This urban development reconnects downtown Montreal and Old Montreal above the Ville-Marie Expressway. The space includes a green belvedere, pedestrian and bicycle paths, and a mirrored artwork paying tribute to 21 women who have made a significant contribution to the history of Montreal. Combining memory, inclusion, and sustainability, this iconic site demonstrates a strong commitment to a more human and equitable urban environment.

Italy Requalification of the former arsenal of Pavia

Located in the southern part of Pavia, the former Arsenal site is a historically significant area that blends architectural heritage with natural elements, including a small canal known as 'Navigliaccio'. The site is undergoing a major urban regeneration effort aimed at transforming it into a new hub for State Administrations. As the lead firm and project manager within the Temporary Grouping of Professionals (RTP), Artelia plays a central role in the overall coordination and delivery of the project.

France Reducing substandard housing in Mayotte

The French government has decided to step up its efforts to eliminate substandard housing (OIN-RHI), a problem exacerbated by Cyclone Chido, which struck the island in December 2024. Artelia is contributing to this program through an eight-year framework agreement for urban project management and environmental studies covering the three municipalities targeted by the OIM-RHI (Koungou, Mamoudzou and Dembéni). In addition to urban design services, this framework agreement provides for additional tasks such as the development of master plans, traffic studies, safety studies, etc. The environmental component also includes an eco-neighborhood certification process.



📍 Denmark
Celebrating craftsmanship at Herning Dormitory

Planning to establish three residences for trade students, BRFonden selected Artelia as the consulting engineer for the Herning dormitory. With the aim of attracting more young people to skilled trades programs, the organically shaped building, which combines wood and masonry structures, is designed to inspire students. Opened in 2025, it showcases craftsmanship and quality in every detail.

Industry



CAREMAG, FRANCE'S LEADING RARE EARTHS PRODUCTION PLANT, FOCUSES ON RECYCLING

📍 France
 Rare earths have become essential resources in the energy, digital and defense sectors. Their extraction and refining is therefore a strategic issue. The creation of the Caremag plant in Lacq, in southwestern France, is part of this context and aims to expand supply options. Its ambition is to meet 15% of global demand for heavy rare earths.

The originality of this plant lies in combining a mining concentrate refining unit with a permanent magnet recycling unit, using either production waste or end-of-life devices. Permanent magnets are widely used in electric motors (vehicles, wind turbines) and are currently one of the main uses of rare earths. Artelia Industrie has been chosen as the EPCM partner to manage the entire project, from design studies to the commissioning of the facilities (production units, buildings, roads and various networks).



Caremag

Circular economy

REUSE PROMOTED DURING THE RENOVATION OF GROUPAMA'S PARIS HEADQUARTERS

📍 France
 The renovation of Groupama's headquarters, a building located on Rue Astorg in central Paris, involved creating a large wooden extension on the garden side, while also refurbishing the roof terrace and office floors. Particularly ambitious in terms of environmental certifications, this project incorporated a strong reuse approach into its program. A significant portion of the existing structure was preserved or reused (facades, finishing work, materials), making this project a remarkable example of resource optimization and carbon footprint reduction. Responsible for design and project management, Artelia mobilized its experts in multidisciplinary engineering, planning, the environment and construction economics, as well as its subsidiaries specializing in facades (RFR Structure et Enveloppe) and acoustics (Gantha).

📍 United Kingdom
HMP Millsike, the UK's first "electric" prison

Working closely with the Ministry of Justice, our subsidiary Pick Everard was the lead designer for a 1,500-place prison in York, which comprises six accommodation blocks and various facilities (central services hub, entrance resource centre, workshops, kitchens, support building and a care and separation unit). The installation of solar panels generates more than 645 MWh of renewable energy on site, and the use of energy-efficient lighting systems and air-source heat pumps has reduced the prison's energy consumption by 70%.

📍 Ivory Coast
New centers in Abengourou and Tengrela for better technical training for young people

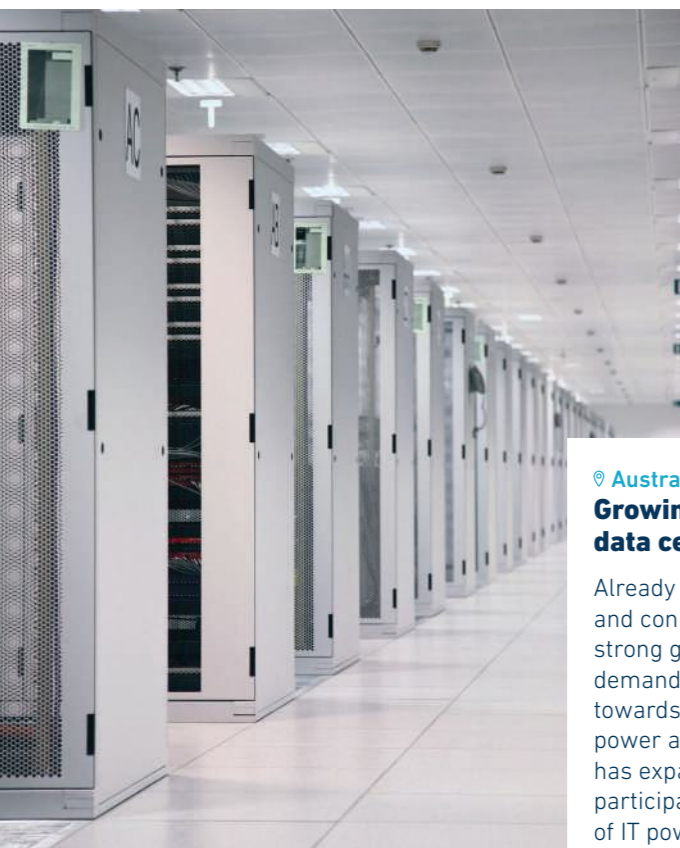
In order to improve the employability of young people, the Ivorian Ministry of Technical Education, Vocational Training and Apprenticeship (METFPA) called on Artelia to assist with the extension and modernization of vocational high schools in Abengourou, near Abidjan, and Tengrela, in the north of the country, 30 km from the border with Mali. Our teams are carrying out technical studies and supervising the work in Abengourou, as well as design studies in Tengrela (architecture, engineering, dimensioning).



📍 Germany

Development of sodium ethylate and methylate production for Envirocat Alkoxides in Lulsdorf

Envirocat Alkoxides is a subsidiary of the International Chemical Investors Group (ICIG), a global industrial player (€3 billion in turnover, 6,000 employees) that focuses on medium-sized chemical and pharmaceutical companies. Artelia is assisting the company in Lulsdorf with the development of a production facility for sodium methylate and ethylate, products that are used in many industries. The project involves implementing a continuous process using metallic sodium and alcohol, which MSSA and Artelia have already implemented in La Rochelle, Western France. This process offers significant improvements (reduced risks, smaller reactors, lower investment costs) compared to the old mercury-based processes, which will be banned in the European Union from 2027.



📍 Australia & France

Growing involvement in the development of high-power data centers

Already under pressure from massive digitization, the rise of the cloud and connected objects, data centers are experiencing a phase of very strong growth with the deployment of AI. To meet the exponential demand for computing and storage capacity, the sector is evolving towards "hyperscale" facilities, characterized by unprecedented power and highly optimized electricity and water consumption. Artelia has expanded its data center business to include this type of facility, participating in the creation or expansion of centers with 200 to 400 MW of IT power.

📍 Gabon

Creation of a compression platform to recover gas from the Mbya offshore oil field

Perenco's development of an LNG plant at Cap Lopez (Port-Gentil), scheduled for commissioning at the end of 2027, opens up new prospects for exploiting the gas associated with the Mbya, Lucina, Hourcquia and Mwengui offshore oil fields. To enable the recovery of this gas, which until now has been flared, and its transport by pipeline, Artelia and its subsidiary Principia, together with Bilfinger, are carrying out basic studies for a compression platform (MOCU). This facility will make it possible to stop gas flaring and recover the gas in the form of LNG.

📍 France

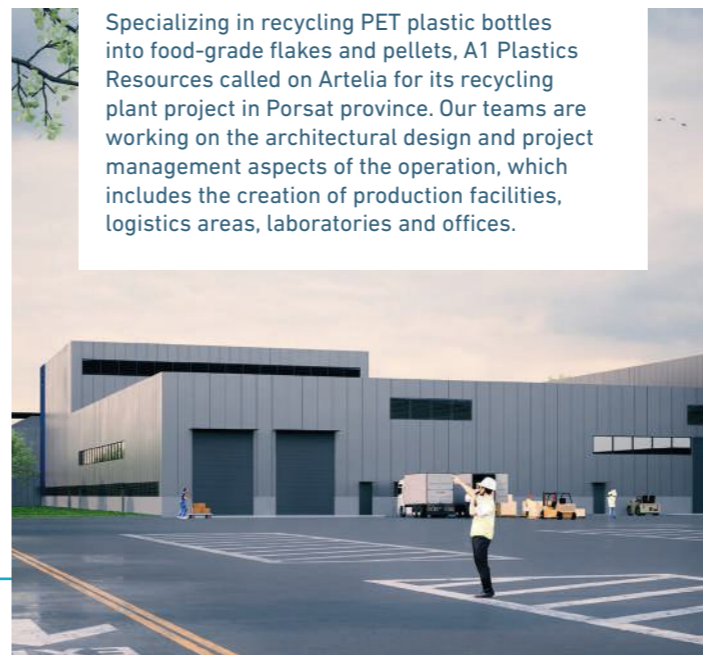
Construction of chemical plants for the semiconductor industry

At its state-of-the-art plant in Amiens, Technic Ultra Pure manufactures chemicals for the semiconductor industry. The site includes specialized areas for handling solvents, flammable products, acids and bases. Artelia delivered two turnkey filtration lines dedicated to these sensitive products, from the design phase through to commissioning of the installations.

📍 Cambodia

Construction of a recycling plant for A1 Plastics Resources

Specializing in recycling PET plastic bottles into food-grade flakes and pellets, A1 Plastics Resources called on Artelia for its recycling plant project in Porsat province. Our teams are working on the architectural design and project management aspects of the operation, which includes the creation of production facilities, logistics areas, laboratories and offices.



📍 Canada

Rehabilitation of docks 1, 2, and 3 in Port-Cartier for ArcelorMittal

ArcelorMittal undertook to rehabilitate the docks at its Port-Cartier site, Canada's largest private seaport, built in the late 1950s. Artelia managed site supervision and construction coordination, addressing the main challenges of this project, which were to carry out all the work without interrupting port operations, while complying with environmental constraints and minimizing the impact on ship loading.

📍 France

Expansion of the Framatome plant in Saint-Marcel as part of the revival of the French nuclear program

The renewal of France's nuclear reactor fleet and the construction of at least six EPR 2 reactors are driving significant mobilization within the domestic industry. Framatome has therefore undertaken to double the capacity of its plant in Saint-Marcel, near Chalon-sur-Saône, which specializes in the manufacture of heavy components for nuclear power plants, and has entrusted Artelia with the complete project management, covering all trades for this project.



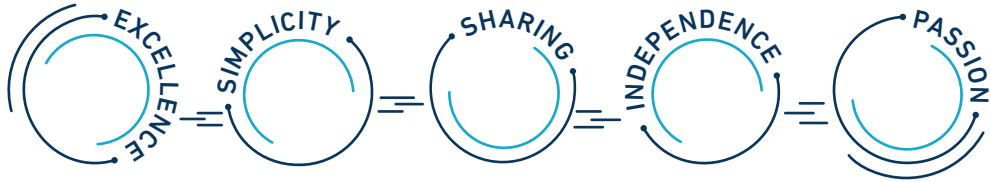
Decarbonization

GREEN HORIZON, INTEGRATION OF A GREEN HYDROGEN PRODUCTION UNIT IN LE HAVRE FOR LHYFE

📍 France

A French pioneer in the production of "green" hydrogen (with a low carbon footprint) for industry and mobility, Lhyfe decided to build a large-capacity plant in the town of Gonfreville-L'Orcher, in the industrial and port area of Le Havre. Artelia is responsible for integrating a hydrogen production facility using water electrolysis (100 MW) at this site. The plant is scheduled to be commissioned by 2029, offering industrial players at the site the opportunity to decarbonize some of their manufacturing processes.

Designing solutions for a positive life



WE ALSO INVITE YOU TO DISCOVER
OUR SUSTAINABILITY REPORT



www.arteliagroup.com