



As a part of innovative efforts of Shell and Artelia, our teams used recycled shipping containers in the recently completed service stations in Rizal Province, Philippines.

Two modular Select shops were constructed using four shipping containers measuring 20 feet each. By using these shipping containers, risk levels and site exposure were reduced significantly because they were built off site and then delivered to the location for finishing touches. These were also modified and carefully retrofitted to ensure safety and to avoid structural failures.

Other notable advantages of the modular shops are their flexibility and mobility. During construction, the shipping containers can be stacked either way depending on the

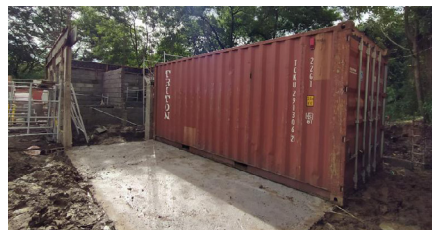
site plan and are movable by using a crane or boom truck. After construction, the finished modular shops can still be transferred or relocated to a different site when necessary.

The construction cycle time was 70% faster than traditional method. The finished shops are guaranteed durable and tough which can last for several years with regular inspection and proper maintenance. The establishments are eco-friendly; less wood and masonry were utilized throughout construction. Due to reduced man-hours on site and less materials, this method entails construction savings.

Innovation has always been one of the pillars of the company. Thus, Artelia Philippines is pushing more modular initiatives in the market.



Pililia, Rizal  
Pre-Construction Phase



Pililia, Rizal  
Construction Phase



Pililia, Rizal  
Finished Construction



Tanay, Rizal  
Pre-Construction Phase



Tanay, Rizal  
Construction Phase



Tanay, Rizal  
Finished Construction