



Designing solutions for a positive life


ARTELIA

An independent multi-disciplinary engineering & project management company

5

Markets

Mobility
Water
Energy
Buildings
Industry



€1.15 bn

2024 consolidated
turnover

10,100

employees

100 %

capital held by managers
and employees



More than

100 years

of expérience

Operating in over

40

countries

An independent multi-disciplinary engineering & project management company

5

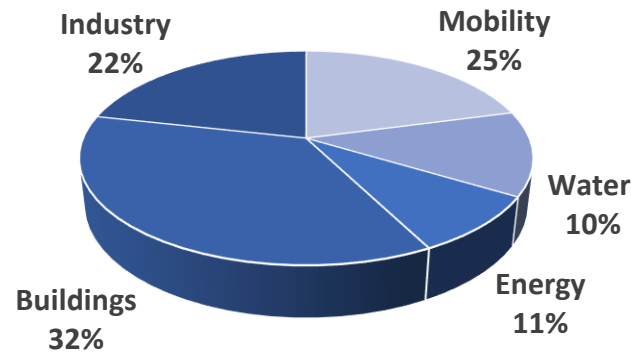
Markets

Mobility
Water
Energy
Buildings
Industry

€1.15 bn

2024 consolidated
turnover

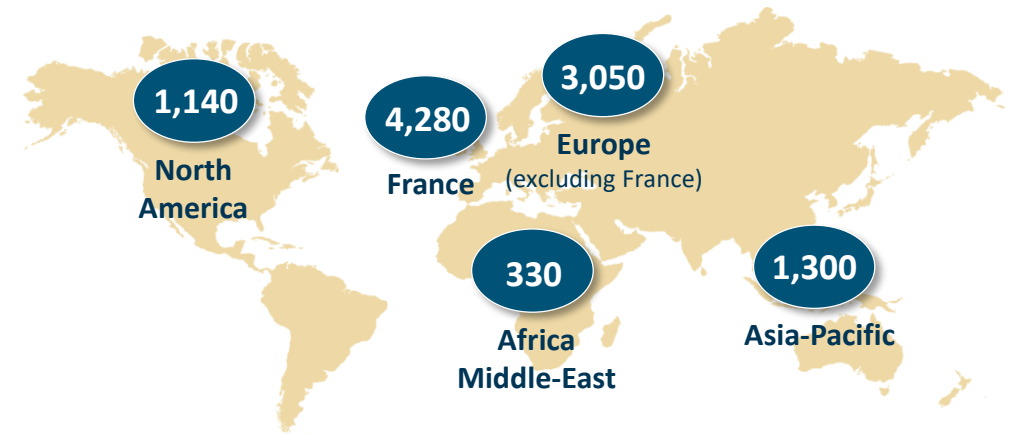
Breakdown per market



10,100

Employees

Operating in over 40 countries



We partner on the entire lifecycle of your project



A full range of services, from technical expertise through to complex project delivery

CONSULTING

MASTER PLANNING
& FEASIBILITY

CONSTRUCTION &
PROJECT MANAGEMENT

DESIGN & ENGINEERING

ASSET & FACILITY
MANAGEMENT

TURNKEY SOLUTIONS

We partner on the entire lifecycle of your project



A full range of services
from technical expertise through to complex project delivery

CONSULTING

- Regional strategy
- Audits, programming
- Financial engineering
- Training, certification

MASTER PLANNING & FEASIBILITY

- Master plan
- Feasibility study
- Environ. & social impact assessments
- Modelling

DESIGN & ENGINEERING

- Design services
- Procurement assistance
- Construction supervision
- Environmental management

CONSTRUCTION & PROJECT MANAGEMENT

- Program management
- Cost & risk management
- Assistance to the Owner
- Technical assistance

ASSET & FACILITY MANAGEMENT

- Asset management
- Commissioning assistance
- Operations and maintenance

TURNKEY SOLUTIONS

- Turnkey projects
- General contracting
- Public-Private Partnerships
- Energy Performance Contracts



We deliver a holistic performance



Top 1% of companies in the “Architecture and Engineering” sector assessed in the world

WE SUPPORT



For our **customers**

More than **100 years** of experience

More than **28,000** projects carried out each year worldwide

For our **society**

A strong culture of **ethics, health & safety**

19 years of philanthropy with the **Artelia Foundation**

For our **planet**

TRACE by Artelia

An advanced sustainable design and monitoring approach of our projects

A firm commitment to the **Science Based Targets Initiative** to reduce our own emissions

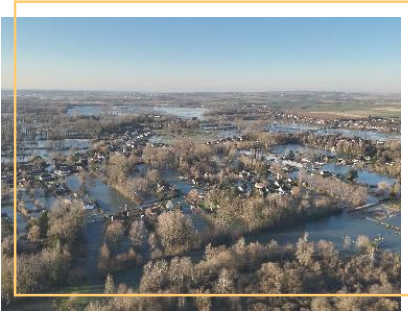
For our **employees**

Career opportunities stimulated by the **Artelia Academy**

An ambitious "Each & All" **Diversity and Inclusion** policy

DESIGNING SOLUTIONS FOR A POSITIVE LIFE

In 2024, the Artelia Group was involved in more than 28,000 projects around the world, contributing on seven strategic challenges.



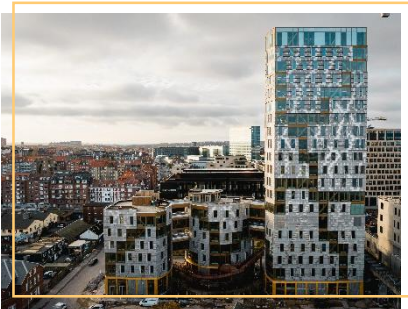
CLIMATE RESILIENCE & BIODIVERSITY

Flood reduction in the lower Canche valley (France)



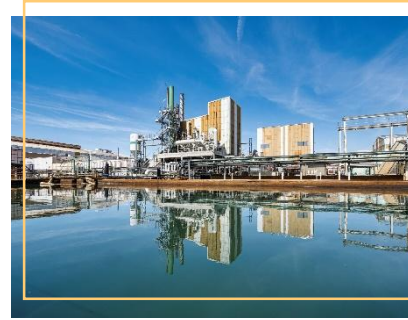
ENERGY TRANSITION

Commissioning of the Nam Ngum IV hydroelectric scheme (Laos)



SUSTAINABLE USE OF RESOURCES

TRÆ building, a beacon for timber and circular construction (Denmark)



ADVANCED INDUSTRIAL FACILITIES

Development of high-purity nickel production for Sibanye Stillwater (France)



REGENERATION OF THE BUILT ENVIRONMENT

New Smart Health Care City in Benguerir (Morocco)



MORE LIVABLE CITIES

Urban regeneration of the Trotto racecourse in Milan (Italy)



SUSTAINABLE & MULTIMODAL MOBILITY

3rd metro line in the Toulouse metropolitan area (France)



WATER

- River basins & water resources
- Irrigation
- River and estuary developments
- Dams & hydraulic structures
- Drinking water & Sewerage
- Storm water & flood protection
- Industrial water intakes & outfalls
- Coastal protection & development
- Ports, terminals, marina developments



5

Markets



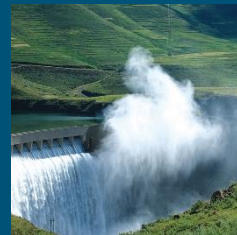
MOBILITY

- Urban transport
- Urban development
- Active travel
- Rail & high-speed trains
- Roads & motorways
- Airports
- River transport & waterways
- Intelligent transport systems
- Bridges & tunnels



ENERGY

- Hydropower
- Nuclear facilities
- Natural gas, biogas
- Hydrogen
- Marine renewable energy
- Solar
- Wind
- Geothermal
- Waste to energy
- Energy efficiency - Green building
- District heating and cooling
- Power networks, interconnections, hybrid systems
- Stockage & Power-to-X



INDUSTRY



- Fuel, biofuels, synthetic fuels
- Petrochemicals
- Chemicals
- Pharmaceuticals
- Food processing, cosmetics
- Aeronautics, shipbuilding, automobile
- Steel industry & mining
- Microelectronics
- Defence

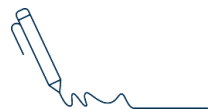


BUILDINGS

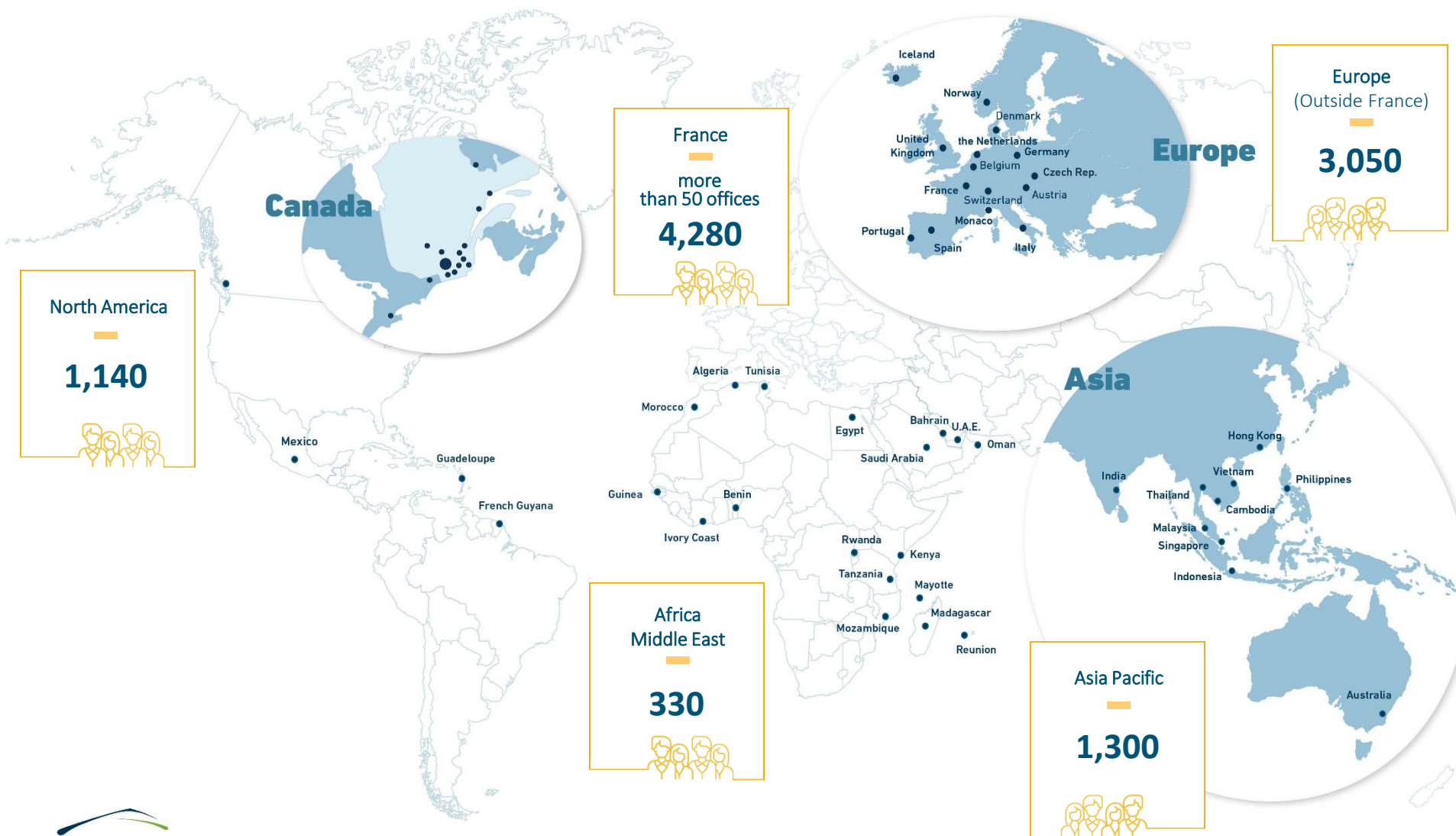


- Office buildings
- Residential, mixed-use projects
- Hospitality & Resorts
- Healthcare
- Education & research
- Commercial facilities
- Sports & Culture
- Heritage buildings
- Industrial buildings, gigafactories
- Logistics centres
- Data centers
- Retail Networks





Supporting our clients around the world



A stronger presence in Europe, Asia-Pacific and Canada, spearheading the Group's development

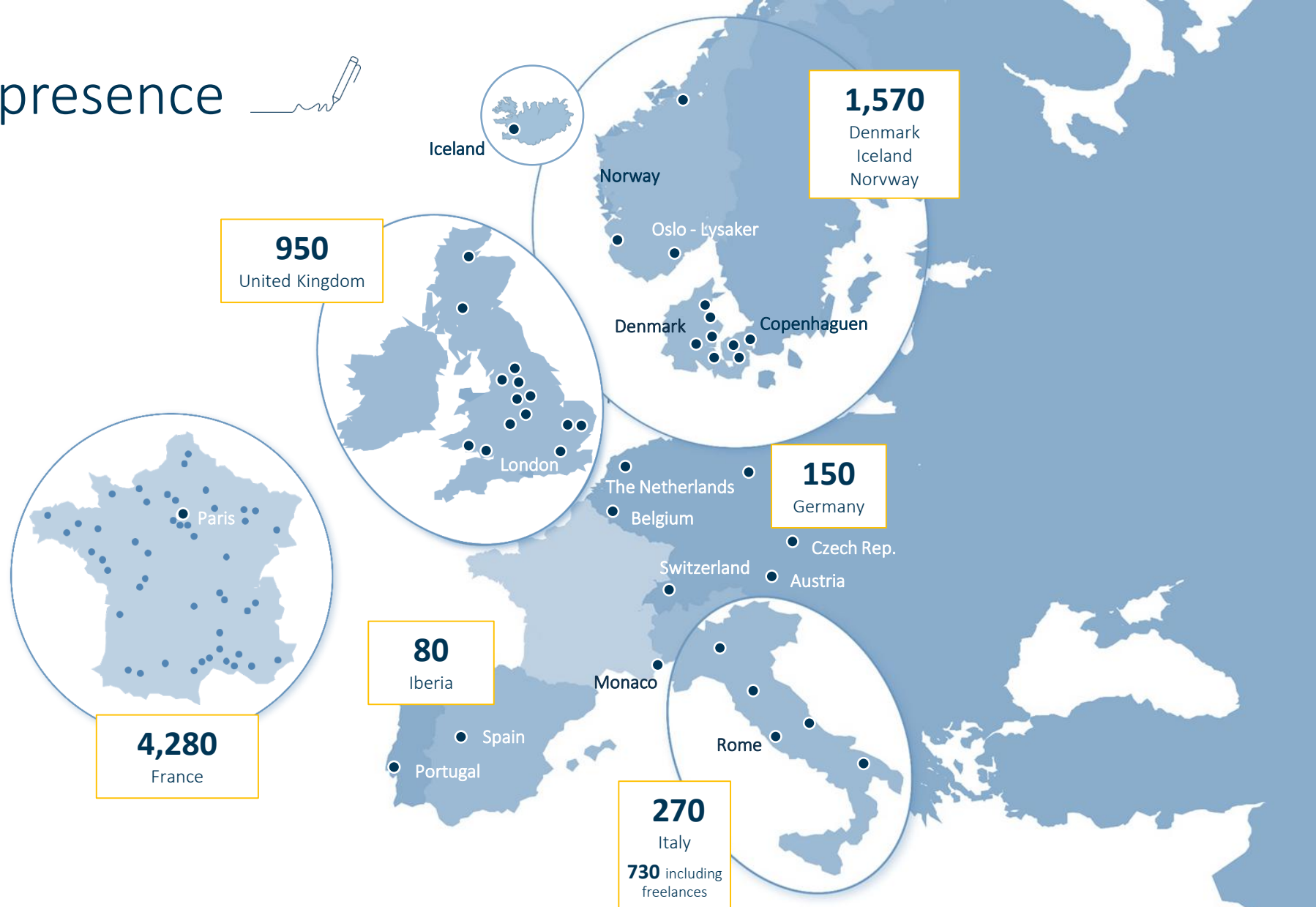
10,100
employees

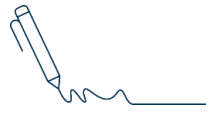
Projects in over
100 countries

Operating in over
40 countries

A strengthening presence in Europe

In 2024, Artelia became one of the **top ten European engineering companies** (EFCA ranking by revenue in Europe).





Supporting our clients in North America

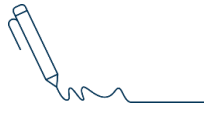
A global network of
15 offices

1,140
employees



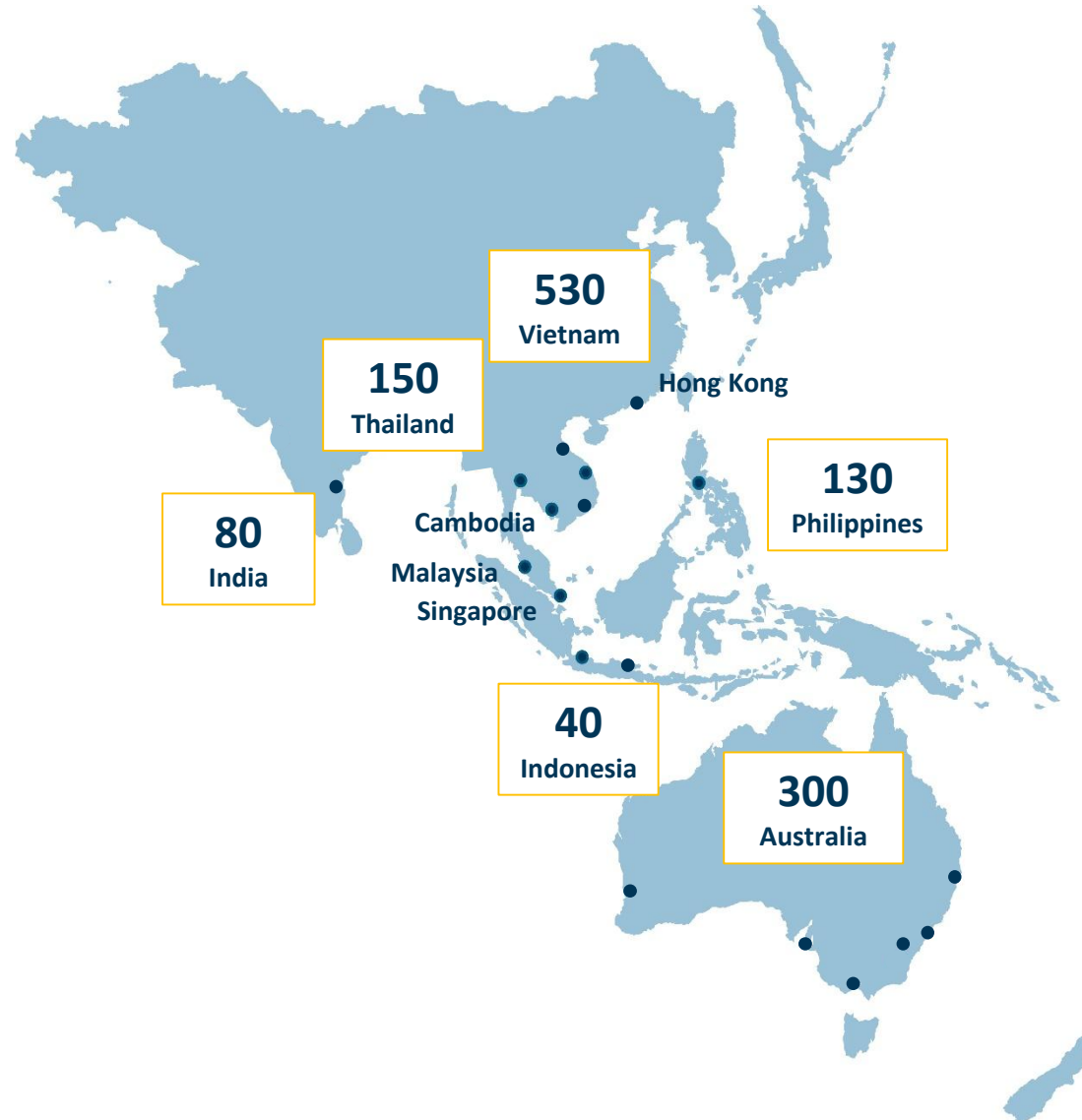
Montreal

Granby
Labrador
Laval
Longueuil
Ottawa
Quebec
Sainte-Agathe-des-Monts
Saint-Jean-sur-Richelieu
Saint-Mathieu-de-Beloeil
Sept-Îles
Sherbrooke
Toronto
Trois-Rivières
Vancouver

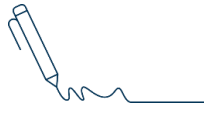


Supporting our clients in Asia-Pacific

A global network of
18 offices
—
1,300
employees



Australia	Adelaide Brisbane Canberra Melbourne Perth Sydney
Cambodia	Phnom Penh
China	Hong Kong
India	Chennai
Indonesia	Jakarta Surabaya
Malaysia	Kuala Lumpur
Philippines	San Juan City
Singapore	
Thailand	Bangkok
Vietnam	Danang Hanoi Ho Chi Minh city



Ensuring local services in France

A regional network
of over

50 offices

4,280

employees



West

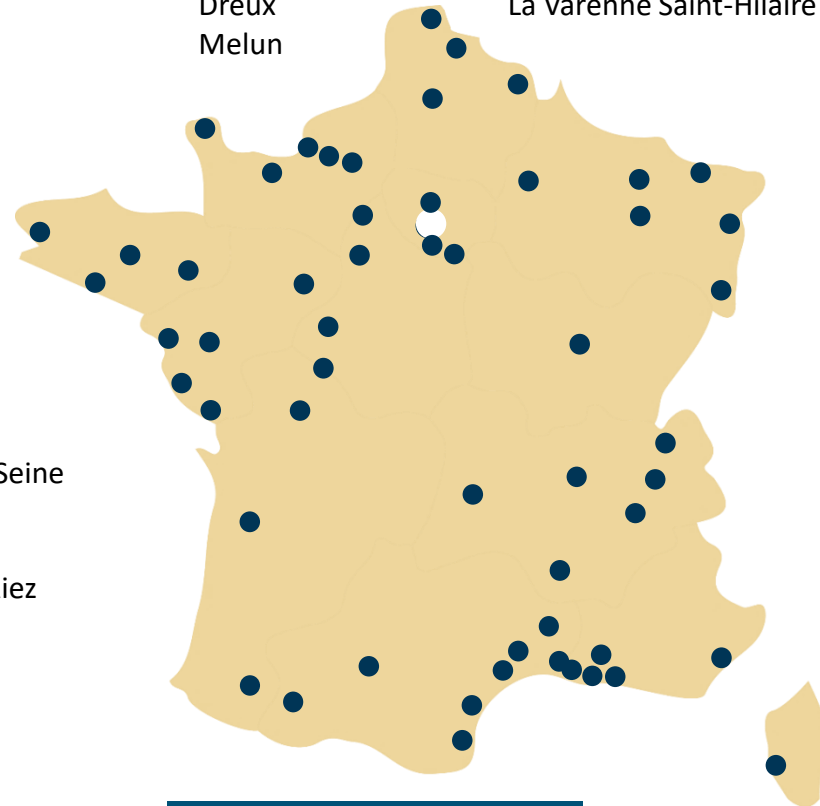
Bouguenais
Brest
Caen
Châtellerault
Cherbourg
La Rochelle
Le Havre
Le Mans
Lorient
Nantes
Poitiers
Pontivy
Port-Jérôme-sur-Seine
Rennes
Rouen
Saint-Hilaire-de-Riez
Saint-Nazaire
Tours

South West

Bordeaux
Pau
Tarbes
Toulouse

Centre - Greater Paris

Chartres
Choisy-le-Roi
Dreux
Melun
Paris
Saint-Ouen-sur-Seine
La Varenne Saint-Hilaire



Overseas departments

French Guiana | Cayenne
Guadeloupe | Les Abymes
Mayotte
Reunion Island | Saint-Denis, Saint-Pierre

North - East

Amiens
Dijon
Dunkirk
Lille
Maubeuge
Metz
Mulhouse
Nancy
Reims
Saint-Avold
Strasbourg

Auvergne-Rhône-Alpes

Bonneville
Chambéry
Clermont-Ferrand
Grenoble
Lyon
Pierrelatte

Mediterranean

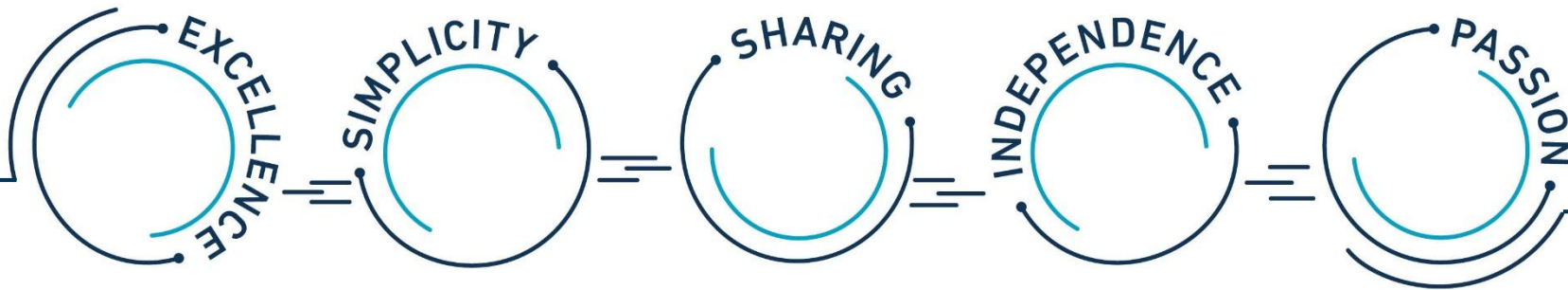
Aix-en-Provence
Ajaccio
Avignon
Béziers
Fos-sur-Mer
La Ciotat
Marseille
Martigues
Montpellier
Nice
Nîmes
Perpignan

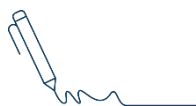


5 values

which are a testament to our history,
reflect our identity and echo our purpose

Designing solutions for a positive life





An ambitious CSR policy

based on 4 pillars and 20 quantified objectives



SCIENCE
BASED
TARGETS

ENSURE RESPONSIBLE GOVERNANCE

- Carry out a detailed assessment of ESG risks and opportunities on **100%** of our significant offers, based on the European taxonomy and the SDG'S
- Train **100%** of our employees yearly on ethical risks
- Integrate ESG clauses in **100%** of our purchase contracts and carry out yearly targeted audits
- Share at least 1/3 of the profit generated by operational activity
- Promote employee shareholding to at least **50%** of employees
- Encourage employee shareholding among young people with an initial objective of at least **50%** shareholders under 45

DEVELOP OUR HUMAN CAPITAL

- Achieve a workplace accident frequency rate of less than **3,25** and aim for **Zero** serious accident
- Aim for **8/10** on the average of the «Commitment» and «Well-being» indicators of the annual employee survey
- Reach **25%** of female managers and in executive positions
- Make **100%** of our employees aware of the Diversity and Inclusion approach «Each&All» every year
- Enable **100%** of our employees to access presence-based or digital training each year
- Co-build new professional opportunities for each employee at least every **3 to 5** years

PROTECT THE ENVIRONMENT

- Reduce the carbon footprint of our direct emissions (facilities and vehicles consumption) to meet the «**1,5°C**» trajectory (scopes 1 and 2, in absolute value and intensity per employee)
- Reduce the carbon footprint of our indirect emissions (mainly travels and commuting) to respect the «**well below 2°C**» trajectory (scope 3, in absolute value)
- Develop internal expertise, in particular by training **100%** of our project managers in methods and tools dedicated to sustainable design / monitoring of projects
- Promote a sustainable design / monitoring approach on **100%** of our significant projects

COMMIT TO DEVELOPMENT AND SOCIAL PROGRESS

- Support **15** research programs through doctoral actions or chairs in order to improve Artelia's social impact
- Participate in **5** programs aimed at promoting engineering professions among women
- Reach **500** annual days of missions for volunteering missions
- Aim to grant at least **3%** of the Group's operating income to the Foundation activities



19 years
of commitment

from current and retired Group staff
members, in aid of social, humanitarian
and environmental causes



FOSTER AND SUPPORT THE WILL TO TAKE ACTION

More than 380 projects supported
around the world since 2006

70 non-profit organisations supported through skill-based
volunteer work, solidarity leave and financial support



www.arteliagroup.com